

VISIONPOSSIBLE

FRPA 2020



WELCOME TO THE 2020 FRPA CONFERENCE!

Parks Asset Management and the Role of GIS

A parks and urban forestry session that explores the use of GIS and asset management software to manage trees and park hardscapes



LEARNING OBJECTIVES

- Understand the difference between asset tracking and asset management
- Understand the role of GIS in asset management
- Understand how asset management aligns with master planning and agency goals

Phil Christman is the Parks Superintendent for the City of Largo. He has 20 years experience in parks maintenance, public works and urban forestry. He is a CPRP, CPSI and a Certified Arborist. Phil currently serves as FRPA's representative on the Southwest Florida Water Management District's Agriculture and Green Industry Advisory Committee. He is involved with various City of Largo infrastructure projects and is the Chairman of Largo's GIS Steering Committee. Phil is a key member of the implementation team for VUEWorks, Largo's new enterprise asset management system.



The Path Ahead



Asset Tracking vs. Asset Management

Asset Tracking

Refers to technical and operational aspects of assets.
What assets do I have? Where are my assets located?
What are the characteristics of those assets?

Asset Management

Refers to the fiscal and business view of assets.
How much does it cost to maintain your assets?
Should you replace, rehab or repair an asset?
How can you lower the Total Cost of Ownership (TCO)?

“If you can’t measure it, you can’t improve it.”
- Peter Drucker



What assets do I have?

Trees – Monocots (e.g. palm trees) and Dicots (e.g. oaks, maples, sycamore trees)

Hardscapes – playgrounds, shelters, benches, drinking fountains, fencing, trashcans

Irrigation – main shut off valves, controllers, zone valves

Equipment – mowers, power tools

Fertilizer and pesticides

More importantly, know what not to track!



Where are my assets?

1. **Do your research** – What are best practices and lessons learned from other cities and counties?
2. **Ask the right questions** – What questions about your assets do you need answered?
3. **Define your data model** – Decide which attributes to collect
4. **Use industry leading GIS** – Where are you going to store this data? ESRI ArcGIS Enterprise
5. **Data Collection** – Who is going to collect the data? What tools are they going to use?

Tip: Use Survey Grade Tools for GPS Coordinates



When is the best time to start?

“Without the right leadership, culture and behaviors, an organization cannot produce its desired outcomes, just as without the right soil, nutrients, environment and gardeners a tree cannot produce its fruit.”

- Living Asset Management, Lafria and Hardwick, Engineers Media (2013)

The best time to start
was years ago.



The second best time
is now.



Why asset management?

Better Management of Urban Forests

Revenue – Not usually a factor in local government software projects

Cost Reduction – Lower ongoing maintenance costs

Cost Avoidance – Time saved (increased productivity), time saved from reduced number of customer service calls, faster repair (and, therefore, less liability) from damaged assets

Risk Avoidance – Reducing the hazards of trees in poor condition through proactive maintenance

Non-Financial Benefits – Increased citizen satisfaction, better forecasting



Who is going to do all this work?

Better Together

- Parks
- Environmental Services
 - Wastewater Collection System
 - Wastewater Reclamation Facility
 - Reclaimed Water
 - Environmental Control
- Streets & Stormwater
- Facilities
- Engineering
- IT Department, Fire Department, Fleet, and more!

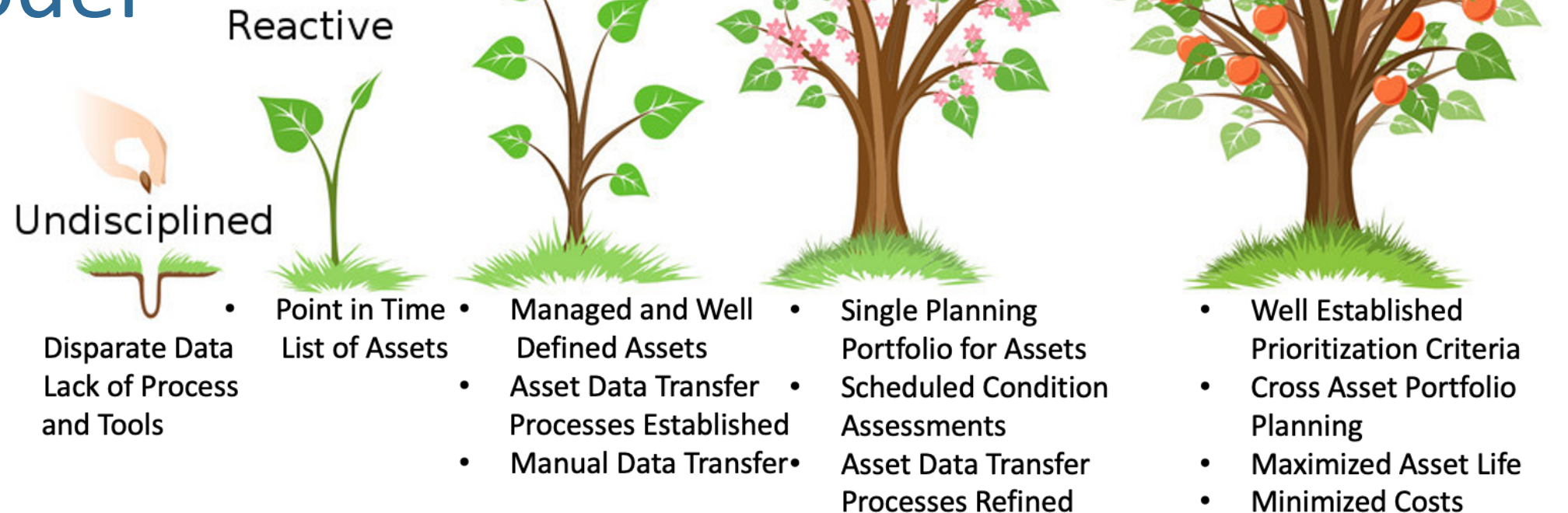


Increasing Decision Making Effectiveness

Objective: Tie Assets to Costs (Fixed and Expense Costs)

Objective: Tie TCO to Prioritization Criteria

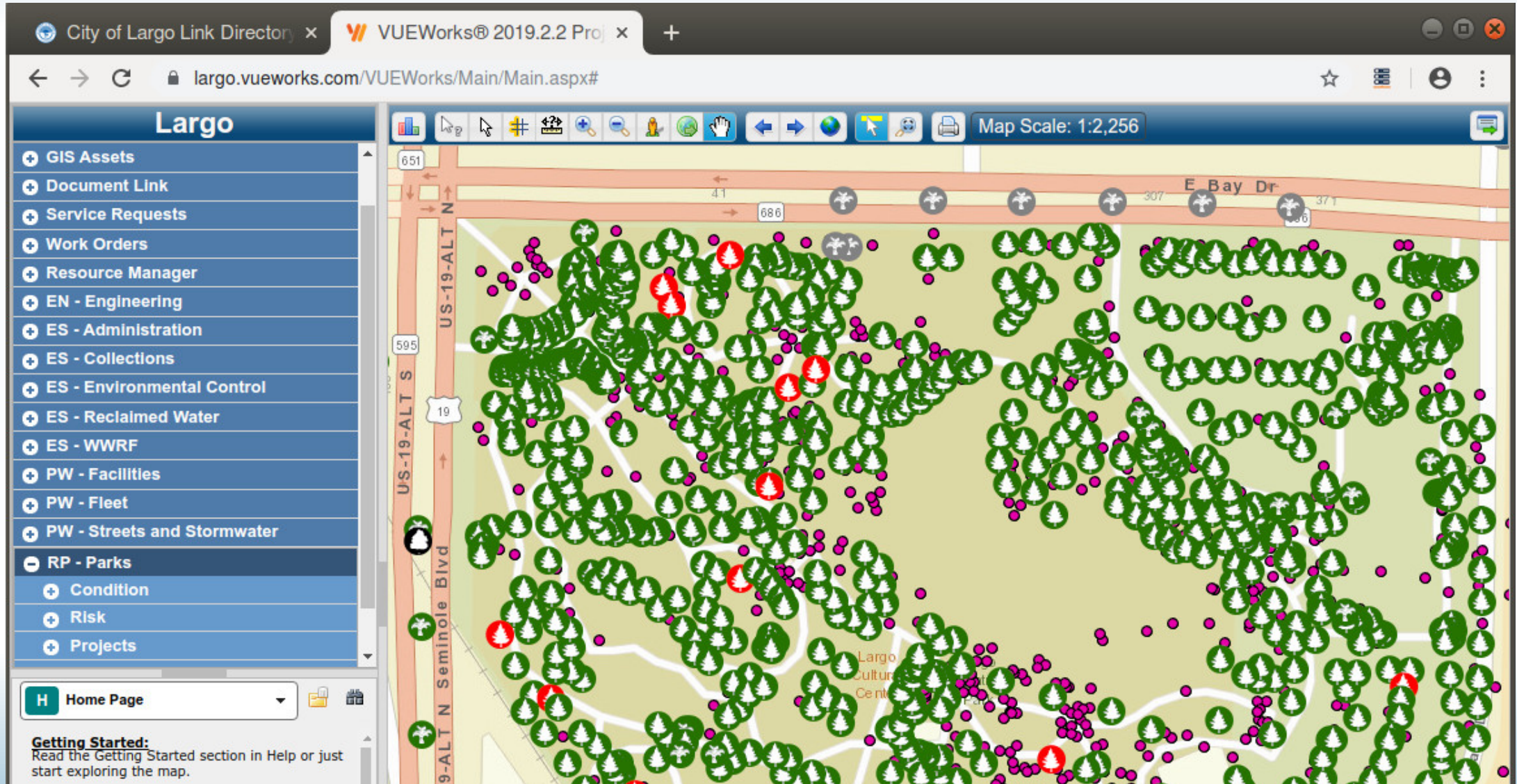
Asset Management Maturity Model



DTS VUEWorks Asset Management System

DTS VUEWorks Features	
Service Requests	Valuation (GASB34)
Work Orders	Budget Forecasting
ESRI GIS Integration	Projects
Request Portal Website	Facilities Management
Resource Manager	MobileVUE Work Order Mobile App
Condition Assessment	FieldVUE Mobile App
Risk Assessment	FacilityVUE Facilities Management Mobile App

Asset Management Software



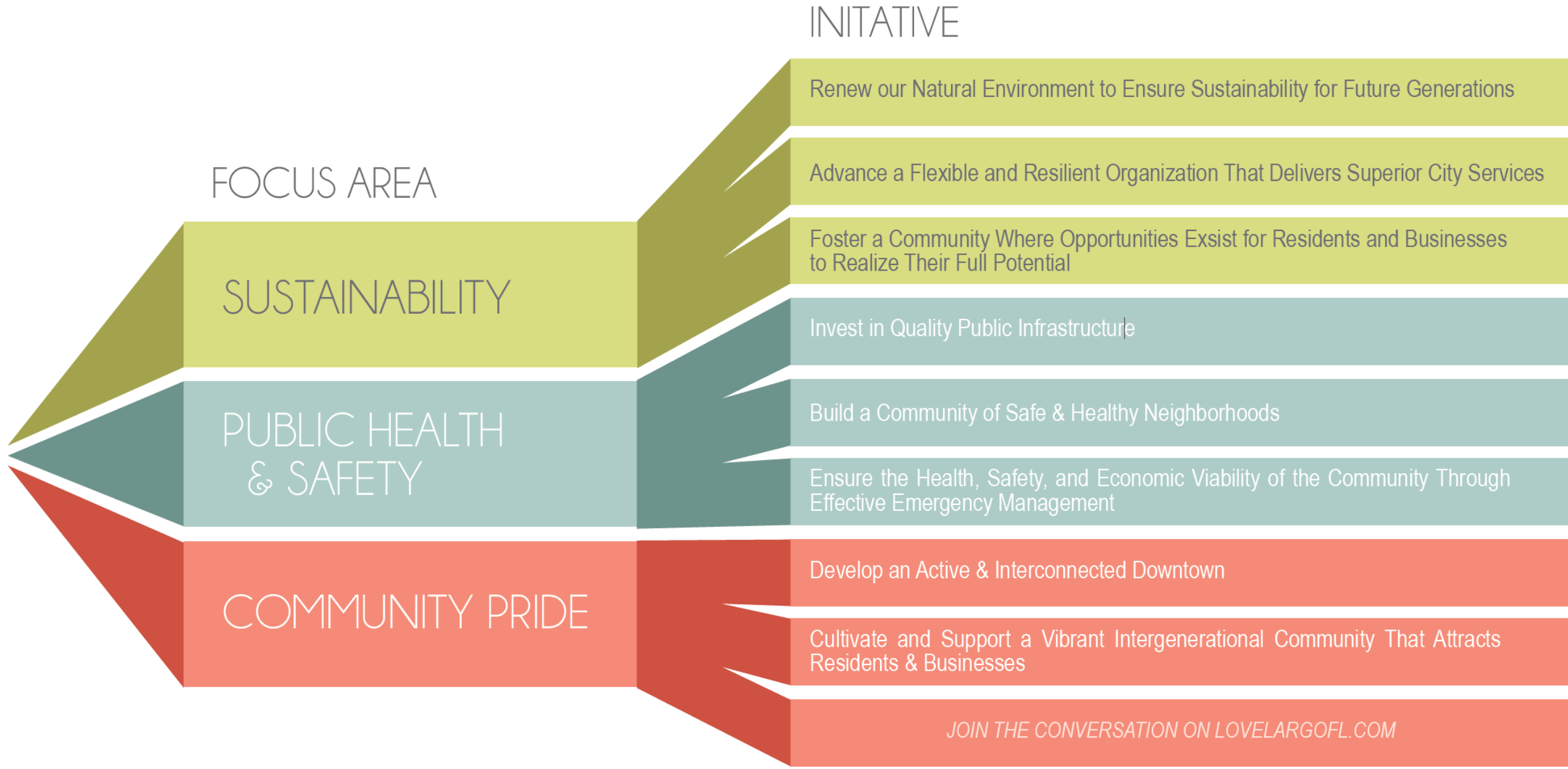
How Asset Management Aligns with Largo Master Planning

Mission 1: Increase Tree Canopy and Associated Services	Mission 2: Progress Through Outreach and Collaboration	Mission 3: Improve Public Tree Management
<p>Strategy 1: Set a Canopy Goal</p> <p>Strategy 2: Work to Achieve Canopy Goal through Preservation</p> <p>Strategy 3: Work to Achieve Canopy Goal through Planting</p> <p>Strategy 4: Work to Achieve Canopy Goal through Support</p> <p>Strategy 5: Regularly Measure and Assess Canopy Progress</p>	<p>Strategy 6: Build a Support Structure and Team for Outreach</p> <p>Strategy 7: Define City Neighborhoods</p> <p>Strategy 8: Develop a Campaign Brand and Messaging</p> <p>Strategy 9: Develop an Outreach Plan</p>	<p>Strategy 10: Complete Missing Inventory Data</p> <p>Strategy 11: Develop a 3-5 Year Management Plan</p> <p>Strategy 12: Improve and Streamline Tree Selection Process</p> <p>Strategy 13: Institute Policy Improvements</p> <p>Strategy 14: Develop a Disaster Management Plan</p>

How Asset Management Aligns with Agency Goals: City of Largo



Largo Strategic Plan



How Asset Management Aligns with Agency Goals: RPA Department

VISION

To be the number one reason people want to visit and live in Largo.

MISSION

To strengthen the community by creating memorable experiences through education, recreation, parks and arts.

VALUES

Passion

Professionalism

Creativity

Teamwork



How Asset Management Aligns with FRPA

VISION

An empowered and engaged network of members, advocates, and partners equipped to advance parks and recreation.

MISSION

To establish parks and recreation as a cornerstone of health, economic development, environmental sustainability, and community throughout the State of Florida.

VALUES

Competence

Leadership

Innovation

Performance Excellence

Stewardship





Phil Christman

Parks Superintendent
Recreation, Parks & Arts Department
City of Largo, FL
pchristm@largo.com
(727) 587-6740