



Preserving a legacy, Norm Westbrook Park

Presented by: Joey Amodo, Parks Designer
Parks & Recreation





 **Norm**



Preserving a Legacy, Norm Westbrook Park



Preserving a Legacy, Norm Westbrook Park

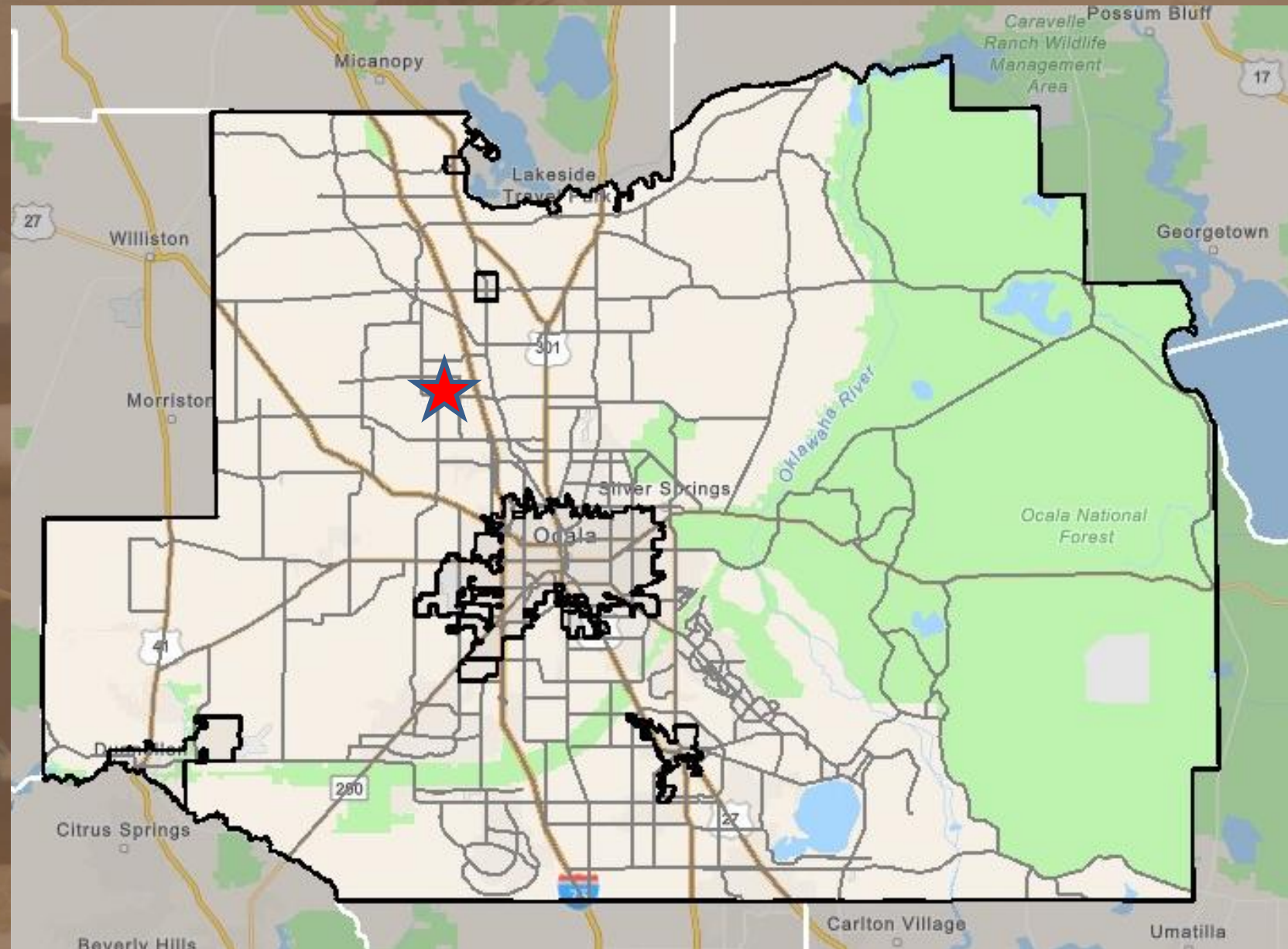


Dedication

- September 3, 2014



🐾 Design Process

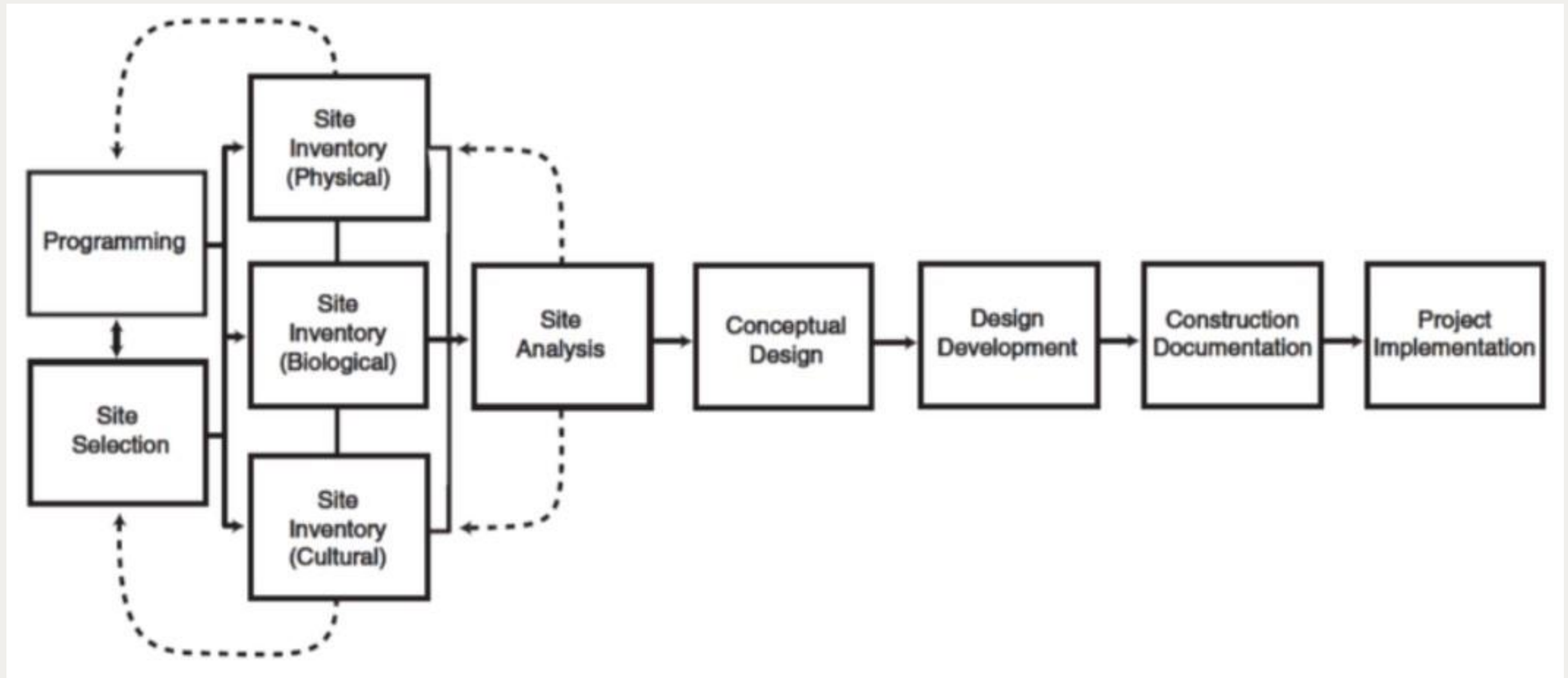


Located in the NW of Marion County

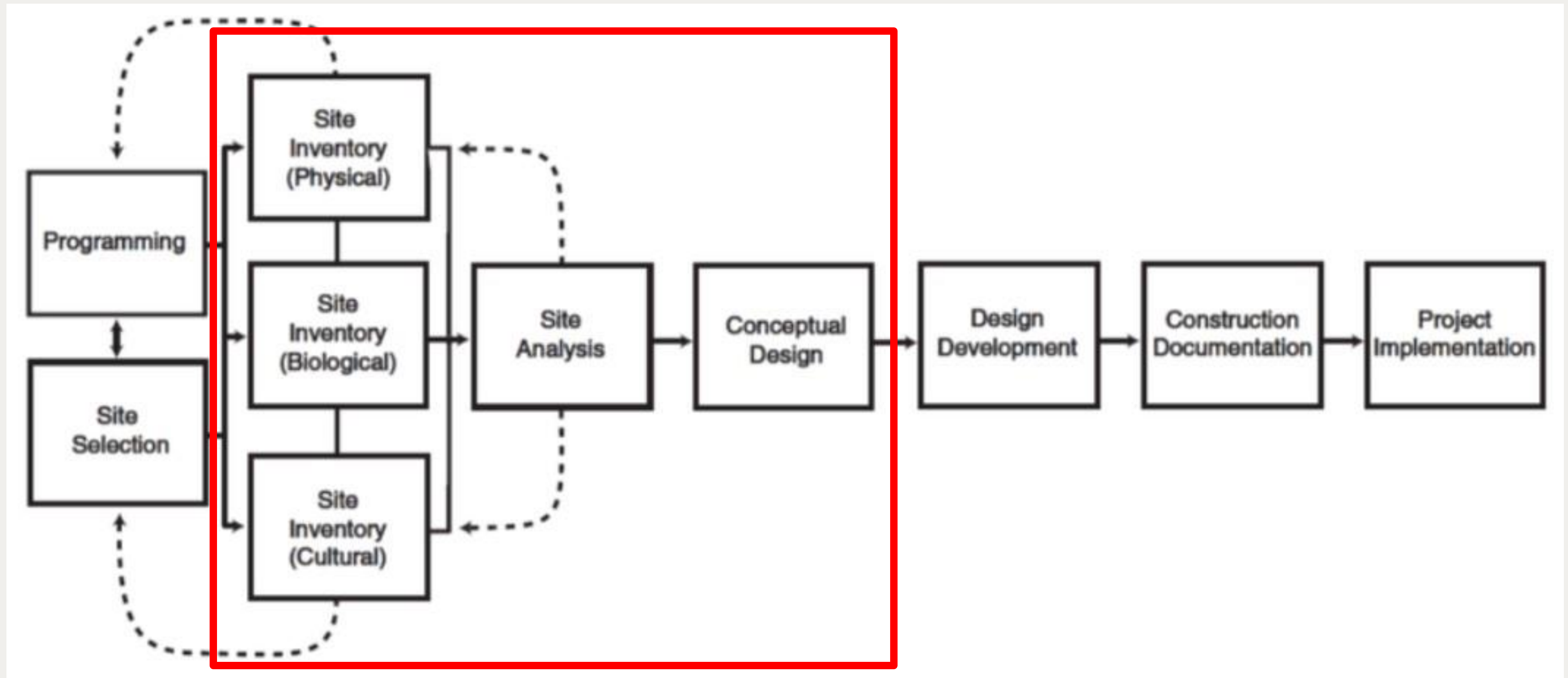


Site = 102.75 Acres

Planning —————> *Design* —————> *Construction*



Planning ————— *Design* ————— *Construction*



Agreement

Norm's desire was to turn the land into a public park that would serve the community.

Phase I

- Open to Public
- Parking Lots
- Trails

Phase 2

- Restroom
- Playground
- Pavilion
- Multi-purpose Field

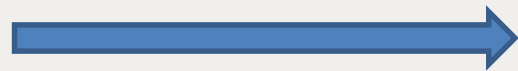


Preserving his legacy

- Barn
- Fencing / gates
- Troughs
- Large Oak Trees



Site Inventory



Site inventory is the documenting of **elements that currently exist** on the site that may impact a design.

Site Analysis

Site analysis is the process analyzing environmental groups such as **Climate, geology, hydrology, topography, and vegetation** on and around the site. It also involves the **Site Inventory Elements, Building and Site codes, and SWOT Analysis.**

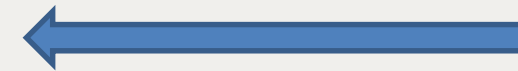


Area of Improvements

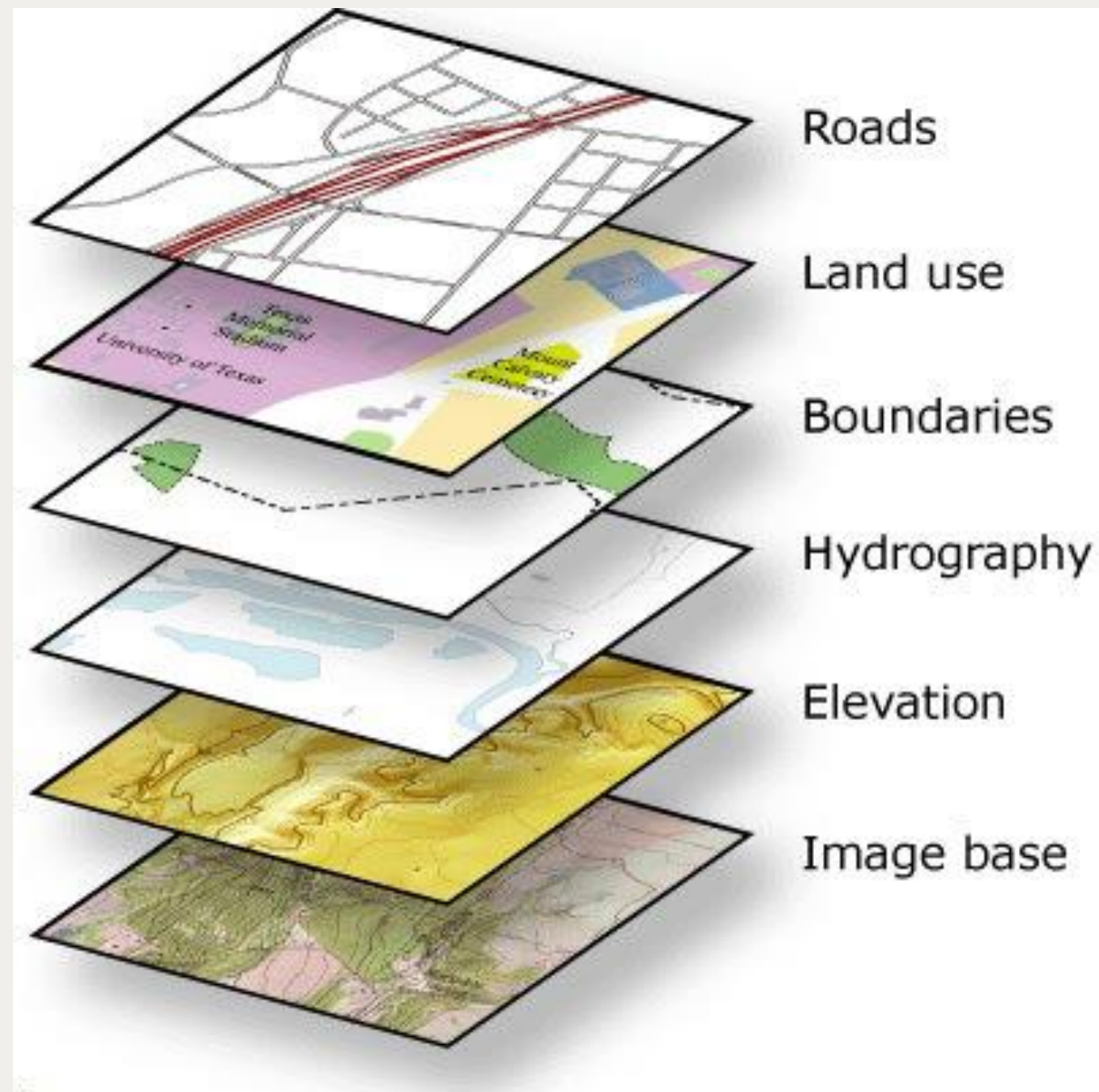


Design

SWOT Analysis



SWOT analysis is a framework for identifying and analyzing a Site's: **Strengths, Weaknesses, Opportunities and Threats**



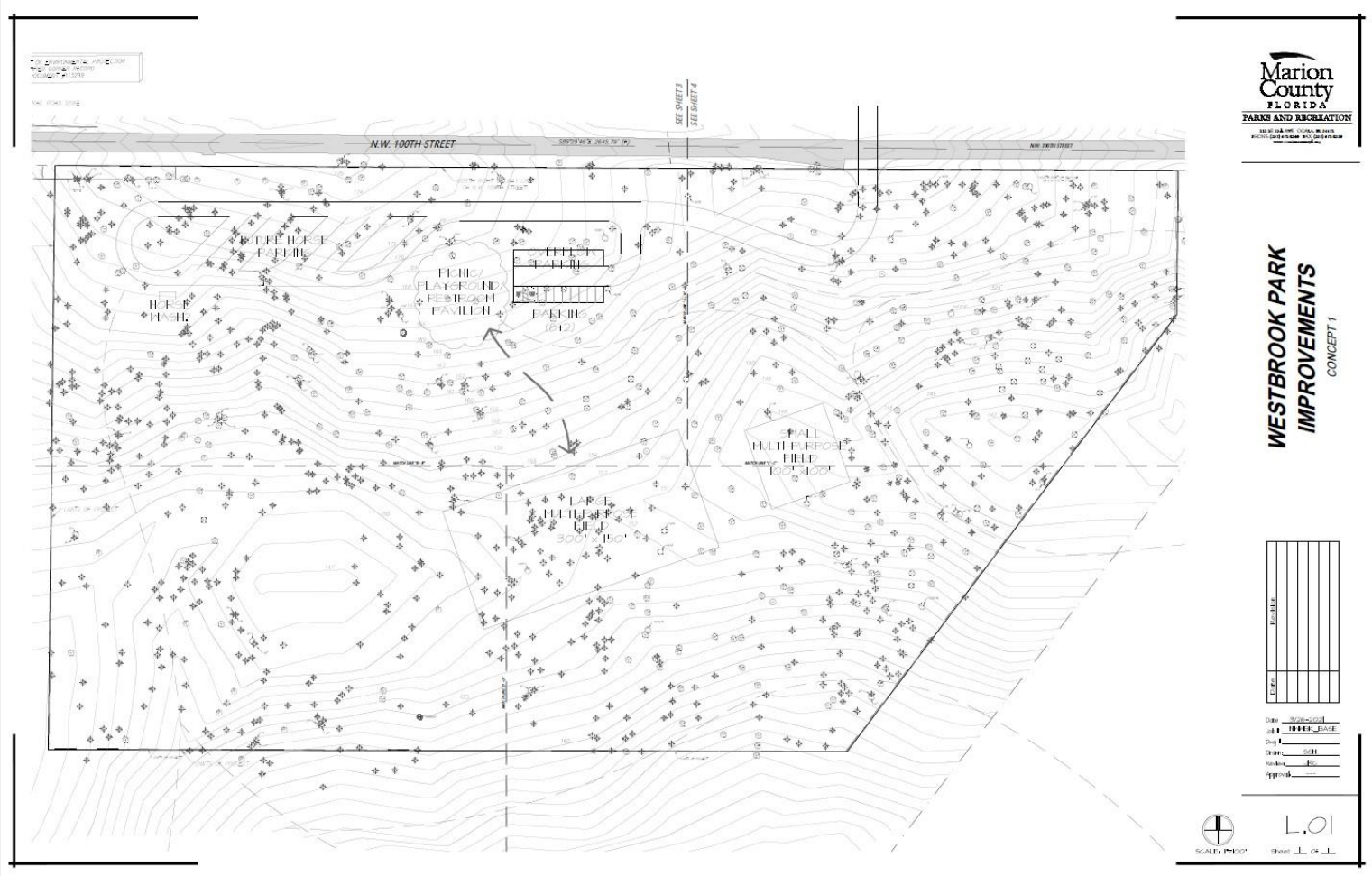
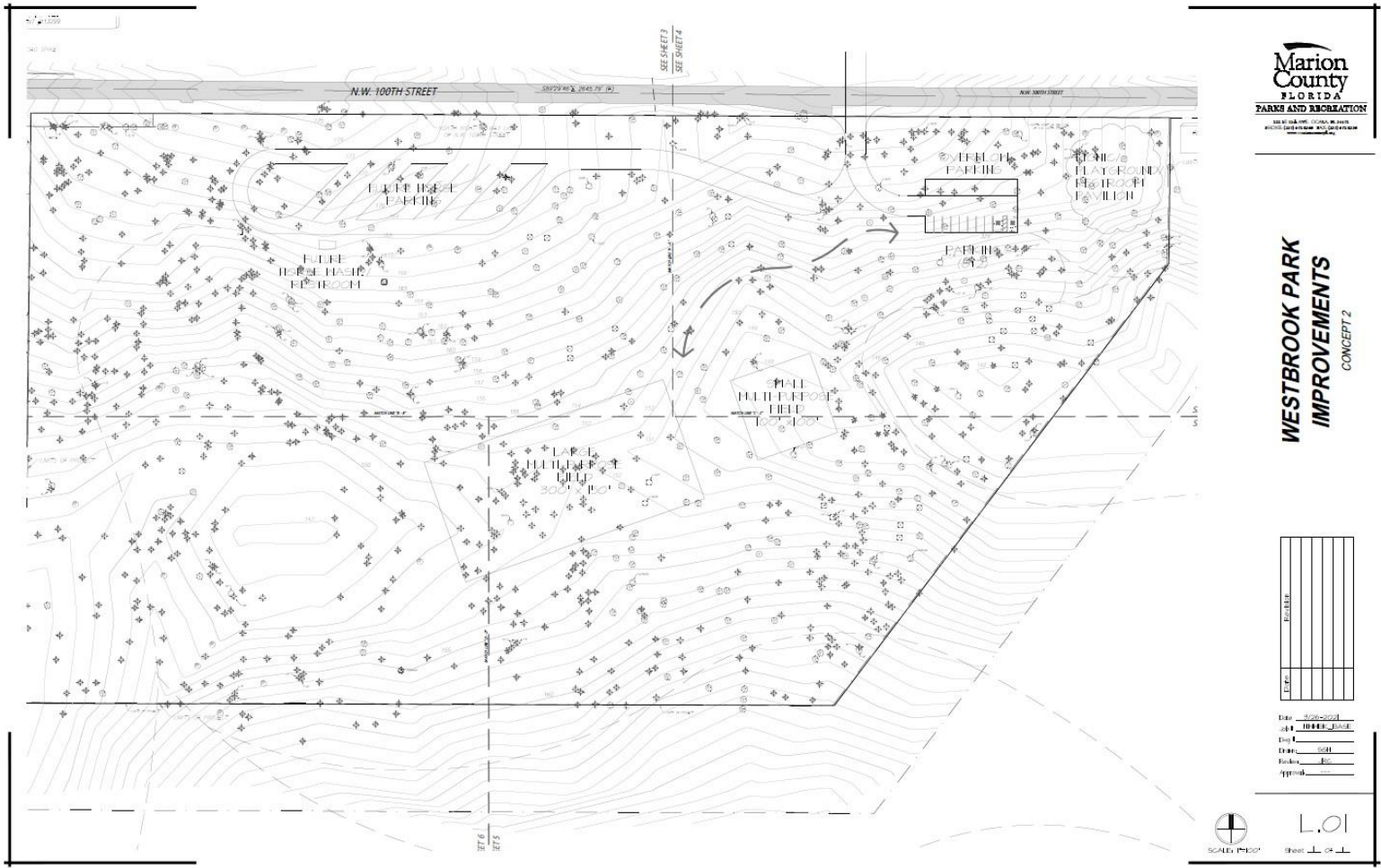
Site Inventory

- Physical – Structures, topography, etc.
- Biological – vegetation
- Cultural – community,

3 Concepts



1 Site Plan



Phase I

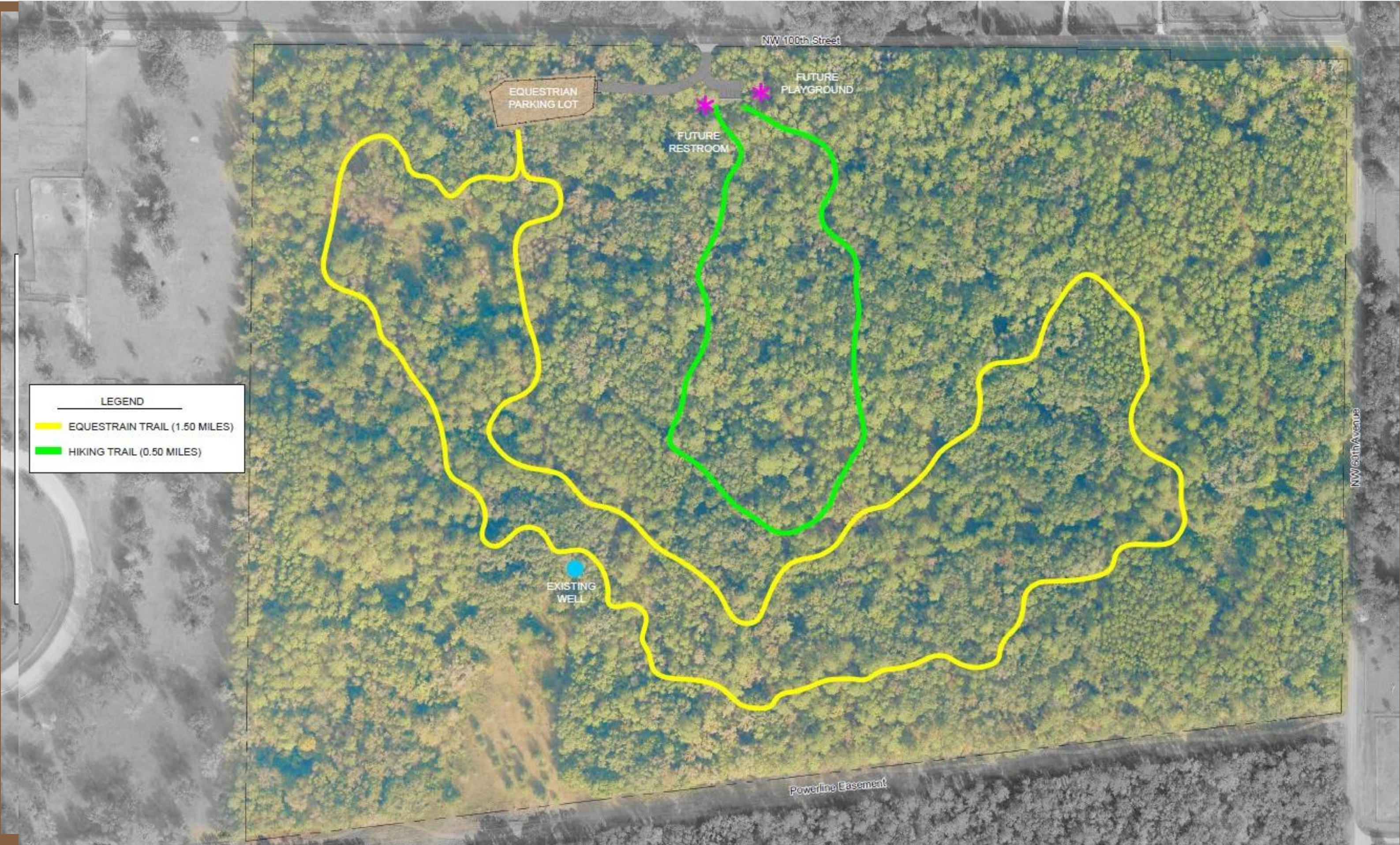


Completed in FY2023

- Open to Public
- Parking Lots
- Trails
- Picnic Tables



Phase I





Future

EXTENSION OF EQUESTRIAN TRAIL & OBSTACLE COURSE



Equestrian Trail

Extension



Extend and redesign the current equestrian trail, 1.5 miles to 3.1 miles with the addition of challenge trail obstacle course.



Obstacle Course



The course is designed for all levels of riding skills, disciplines and breeds. Whether you are a recreational trail rider looking to season your horse over obstacles, a competitive rider wanting to help you improve your horsemanship





BACK, L-BACK & SIDE PASS

Back

-Rider should initially glance backwards to check direction and then remain balanced with eyes forward while backing horse slowly.

L-Back

- Back horse slowly through obstacle with straightness, horse should not step on or out of timbers.

Side Pass

- Horse should straddle one timber and move laterally end-to-end in either direction.

COWBOY CURTAIN

Ride horse through simulated vines. Two different curtains. Ropes and plastic chains.

- Horse should be centered and proceed willingly at a walk without hesitation, side step, refusal or rushing.

COURSE OBSTACLES

COURSE OBSTACLES



UPHILL CLIMB

Ride horse calmly uphill at a walk.
- Rider should be in an up and forward position, using a soft rein.



BRIDGE CLIMB

Horse must walk over the bridge.
- Horse may regard bridge for a moment and then proceed without hesitation.



MOUNT/DISMOUNT

Rider to mount horse, grabbing rein and mane, landing softly in the saddle while horse stands absolutely still.
- Rider should dismount, maintaining control of reins while horse stands absolutely still.

COURSE OBSTACLES



STEPS

Horse should approach obstacle in a straight line and remain calm with a steady rhythm, stepping up and down.



GATE

Ride up parallel to gate and stand quietly, open gate in any manner, walk horse through opening, turn horse, side pass to close gate.
- Rider must keep hand on gate at all times.



TRACTOR TIRES

Horse should approach obstacle in a straight line and remain calm with a steady rhythm, walking between the tires. For added difficulty try backing through the tires.

Phase 2



Slated for FY2025
Construction

- Restroom
- Playground
- Picnic Pavilion
- Multi-purpose Field





Questions

