



Foodscapes

MARK BAILEY
AMANDA MAREK
UF/IFAS EXTENSION
MARION COUNTY

UF/IFAS Extension Marion County

- What is Extension?

Extension is a partnership between state, federal, and county governments to provide scientific knowledge and expertise to the public.

- We are a branch of UF / IFAS in Marion County, FL.

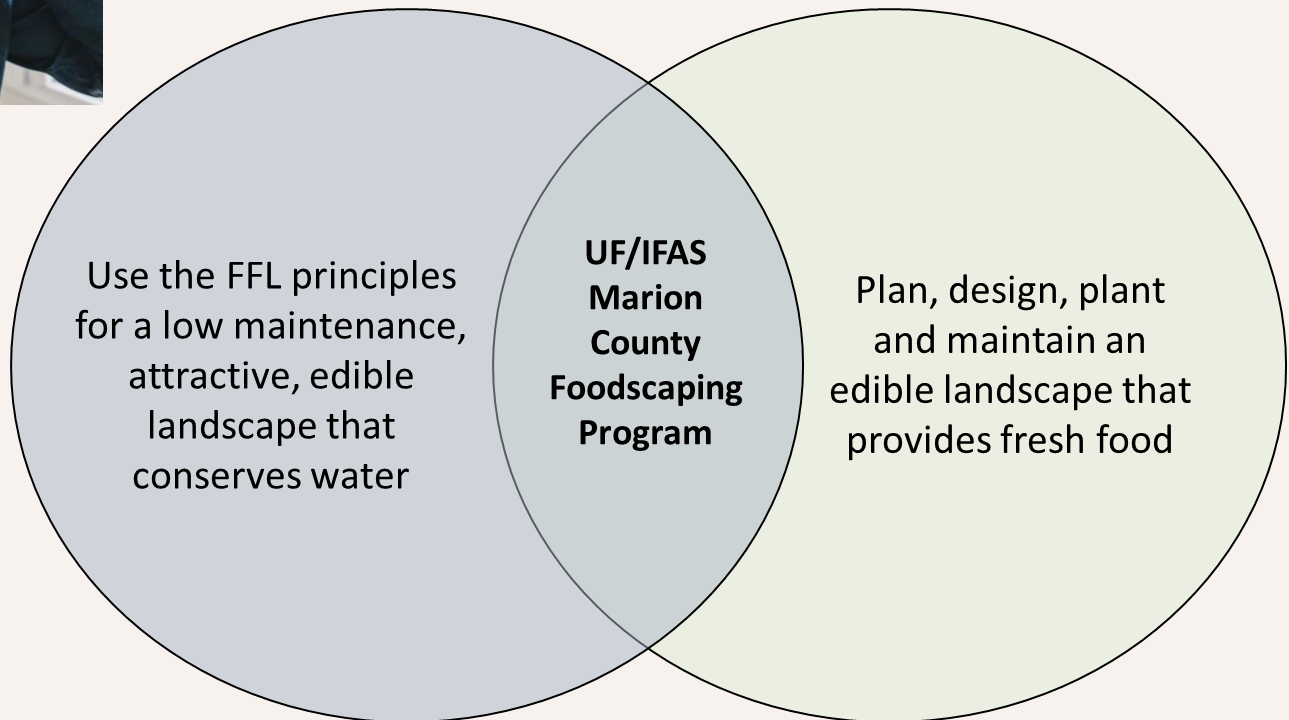


How it Began

The need and the purpose...

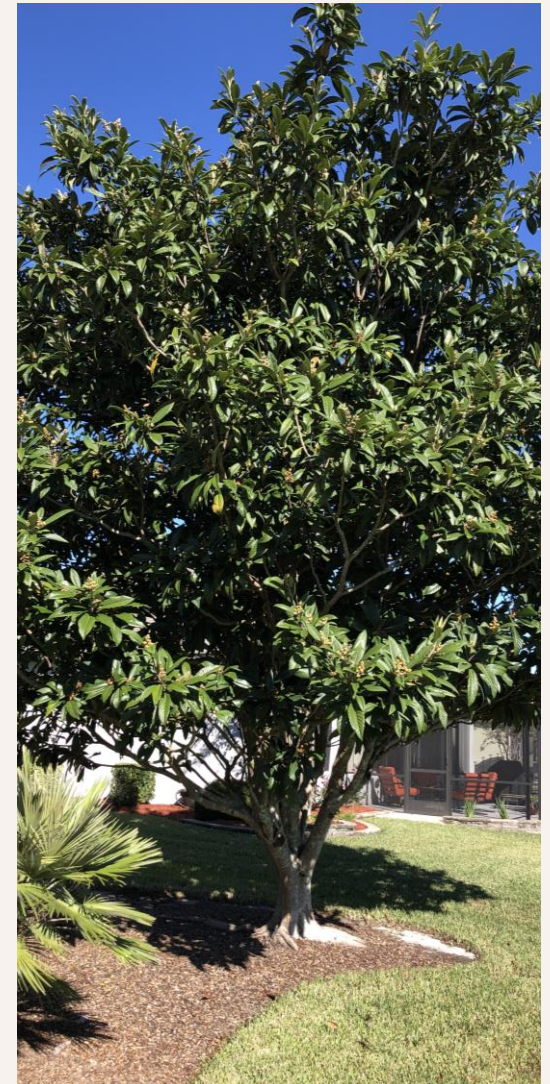



"Hi I'm stuck at home because of **COVID** and want my yard to be pretty but I also want to eat it. Can you help me?"



Foodscaping

- Foodscaping, or edible landscaping, is the "artful combination of edibles and traditional ornamentals in the garden." - Dr. Gail Hansen, UF/IFAS
- Select, install and maintain plants according the FFL principles
- Focus on perennials



A close-up photograph of a dense, low-growing shrub, likely a species of blueberry. The plant features a mix of green and reddish-purple foliage, with small, star-shaped flowers and clusters of blueberries in various stages of ripeness (green, white, and blue). The background is dark and out of focus.

Plant Selection Criteria:

1. Native or Florida-friendly
2. Productive with minimal input
3. Attractive in landscape
4. Few pest, disease issues
5. Support wildlife

Florida-Friendly Landscaping™ PROGRAM



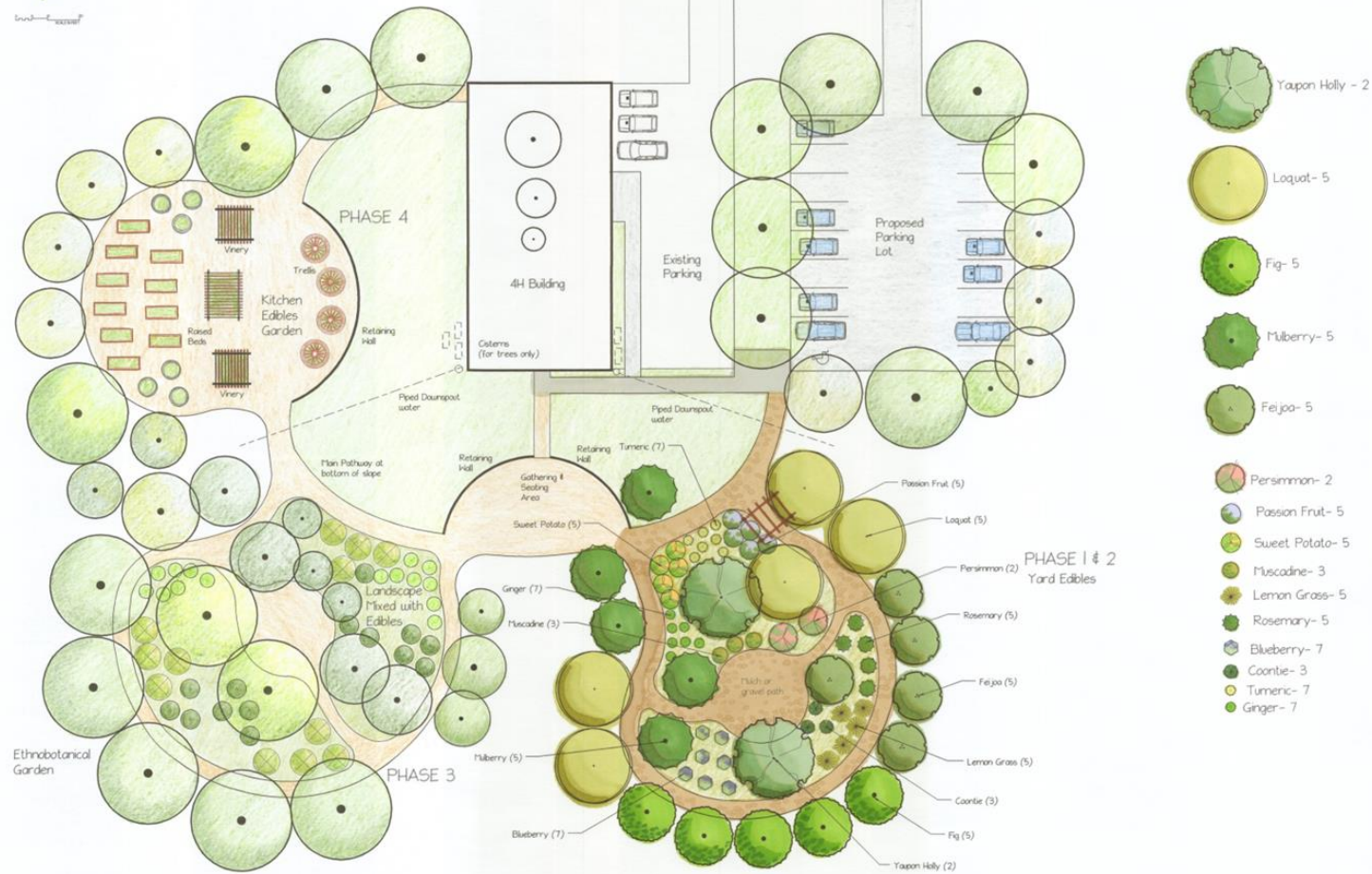
FFL Principle	Use in the Landscape
1. Right Plant, Right Place	<p>Test your soil pH</p> <p>Match plants to your climate, light, soil & water conditions</p> <p>Know the mature size of the plants to allow space</p> <p>Select low-maintenance, hardy, non-invasive plants</p>
2. Water Efficiently	<p>Microirrigation uses water efficiently to the roots; reduces disease pressure</p> <p>Reduce irrigation once established</p>

FFL Principle	Use in the Landscape
<p>3. Fertilize Appropriately</p>	<p>Healthy, fruiting and flowering plants may not need fertilizer</p> <p>Some edibles appreciate fertilizer before or during fruit-set</p> <p>Don't fertilize before a heavy rain</p> <p>Test your soil before planting and fertilizing</p>
<p>4. Mulch</p>	<p>Use organic mulch like pine bark or melaleuca</p> <p>2-3" for best weed suppression away from trunk or base</p>

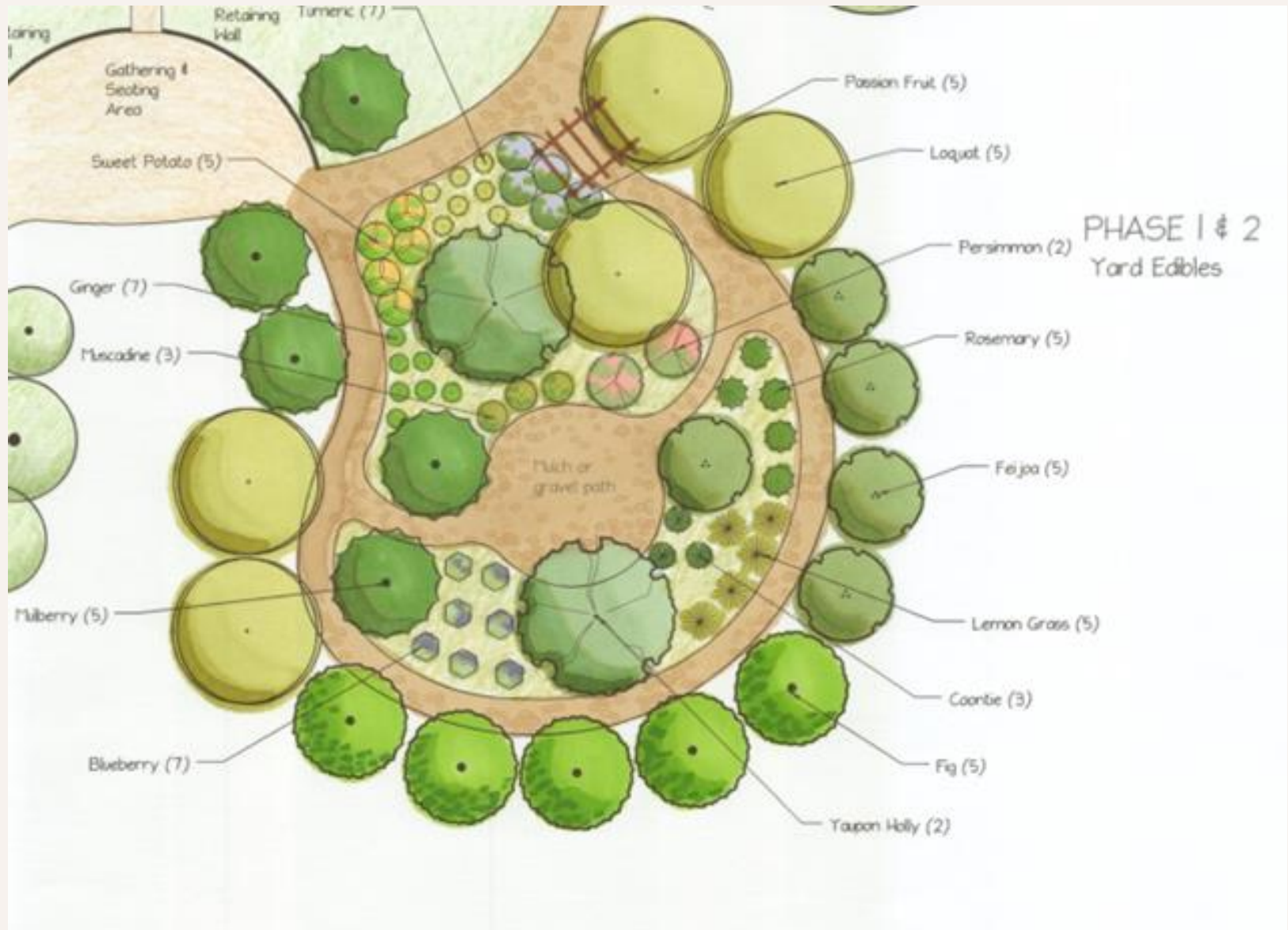
FFL Principle	Use in the Landscape
5. Attract Wildlife	<p>Plant pollinator and host plants to optimize fruit-set</p> <p>Have tolerance for some wildlife damage</p>
6. Manage Yard Pests Responsibly	<p>Identify the pest first</p> <p>Allow natural predators to do the work for you</p> <p>Use the least toxic control methods first</p> <p>Always read and follow the label instructions</p>

Designing the Garden

UF/IFAS Marion County Extension 4H Building Edibles Demonstration Garden		
Scale 1" = 20'	Date July 1, 2020	Revision 1
Drawn by ghansen	Checked by	Reviewed by



Designing the Garden



Partnerships

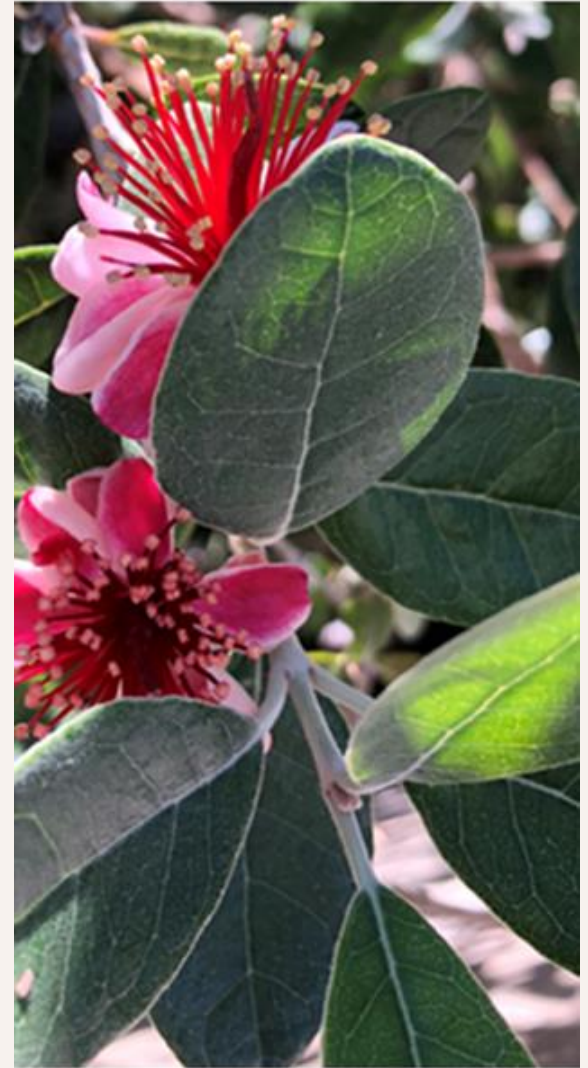


Marion County Hospital District



Partnerships

- Total Budget: \$5000 (\$3000 in grants)
- Grant funding from the FFL State Office via the DEP
- Grant from the Marion County Hospital District
- Designed by Dr. Gail Hansen with multiple phases
- Phase 1 completed spring 2021 with educational signage and plant IDs
11,000 square feet
- Over 80 plants of 20+ different cultivars of native, non-native, edible and non-edible ornamental plants



Installation

- **Mulch**
- Planting
- Irrigation
- Signage



Installation

- Mulch
- **Planting**
- Irrigation
- Signage



Installation

- Mulch
- Planting
- **Irrigation**
- Signage



Installation

- Mulch
- Planting
- Irrigation
- **Signage**



Project Completion



Maintenance

- Labor: weeding & pruning
- Irrigation maintenance
- Equipment and manpower needed
- Getting to plant establishment



Cons of a Demo Garden

- Weeds, weeds and weeds
- Suckers
- Continual maintenance needs – labor
- Scrumpers (yes that is a real word)





Pros of a Demo Garden

- Excellent venue for in-person, hands-on learning and programming
 - Public programs
 - In-service trainings
- Accessibility
- Public Ag / Enviro. Awareness Events
- Partnerships with FANS (Fitness and Nutrition in Schools) Programs
- Supplement to current Ag, Food, Science and Natural Resources Curriculum

Points to Keep in Mind

- Match plant to site conditions
- Patience – getting to establishment
- Equipment and manpower needed
- Long-term maintenance plan
- It's all worth it!



Upcoming Programs

- Spring Festival
March 9th and 10th
- March 13 online
Foodscaping
program
- March 15 garden
tour
- May 2 Plant to
Plate



Any Questions?

Mark Bailey and Amanda Marek

UF/IFAS Extension Marion County

2232 NE Jacksonville Rd

Ocala, FL 34470

352-671-8400

<https://sfyl.ifas.ufl.edu/marion/>

ironhill@ufl.edu

mandab@ufl.edu



<https://www.facebook.com/MarionCountyMasterGardeners/>

Mini - Survey

