

Welcome to the 2023 FRPA Conference!



August 28 - 31, 2023 | Orlando, FL

Security in Community Centers





Sam Elsheikh

selsheikh@olcdesigns.com

Charlotte Presensky

cpresensky@pbgfl.com

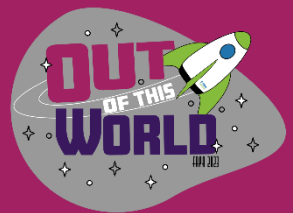
LEARNING OBJECTIVES

1. Identify the vulnerabilities of your facility/site
2. Discuss how to deter bad behavior and prevent crime
3. Discuss a case study of Burns Road Recreation Center in Palm Beach Gardens



IDENTIFY VULNERABILITIES

Identifying vulnerabilities of a facility and site is an essential step in ensuring the safety and security of the facility. Here are some steps you can follow to identify vulnerabilities:



RESOURCES



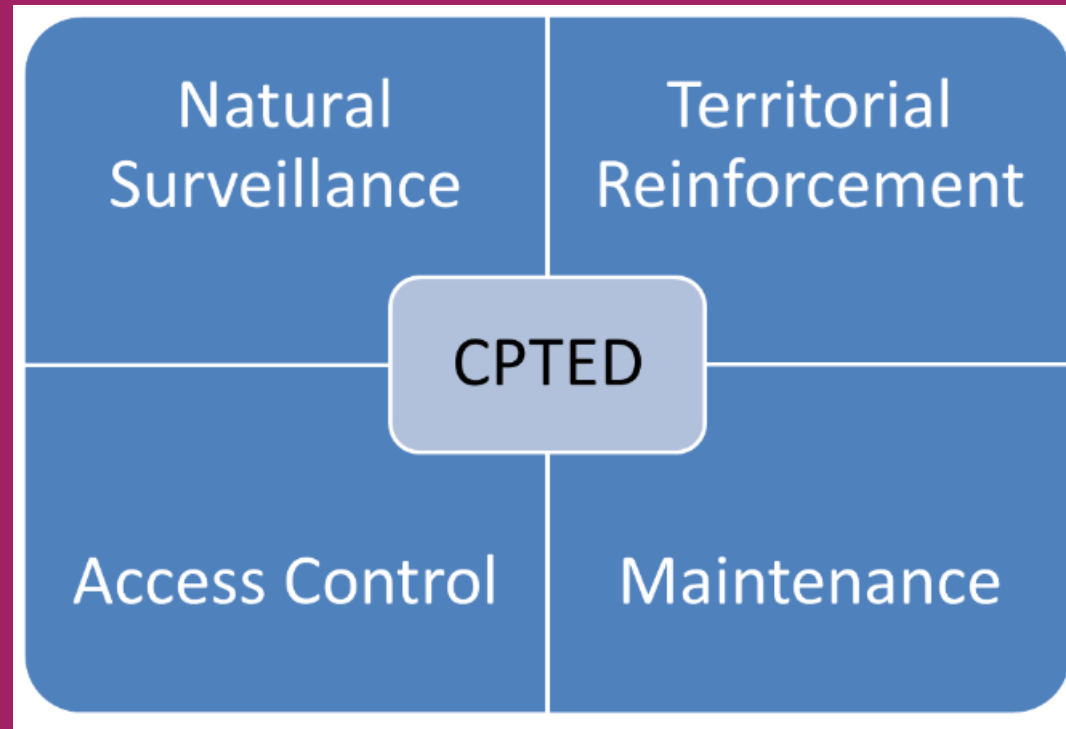
Crime Prevention Through Environmental Design (CPTED) School Assessment (CSA)

May 2017

https://rem.s.ed.gov/docs/CDC_CPTEDSchoolAssessment.pdf



Crime Prevention Through Environmental Design



The **PROPER DESIGN** and **EFFECTIVE USE** of the built environment that can lead to a **REDUCTION** in crime



Natural Surveillance

Placement of physical features, activities, and people in a way that maximizes visibility.

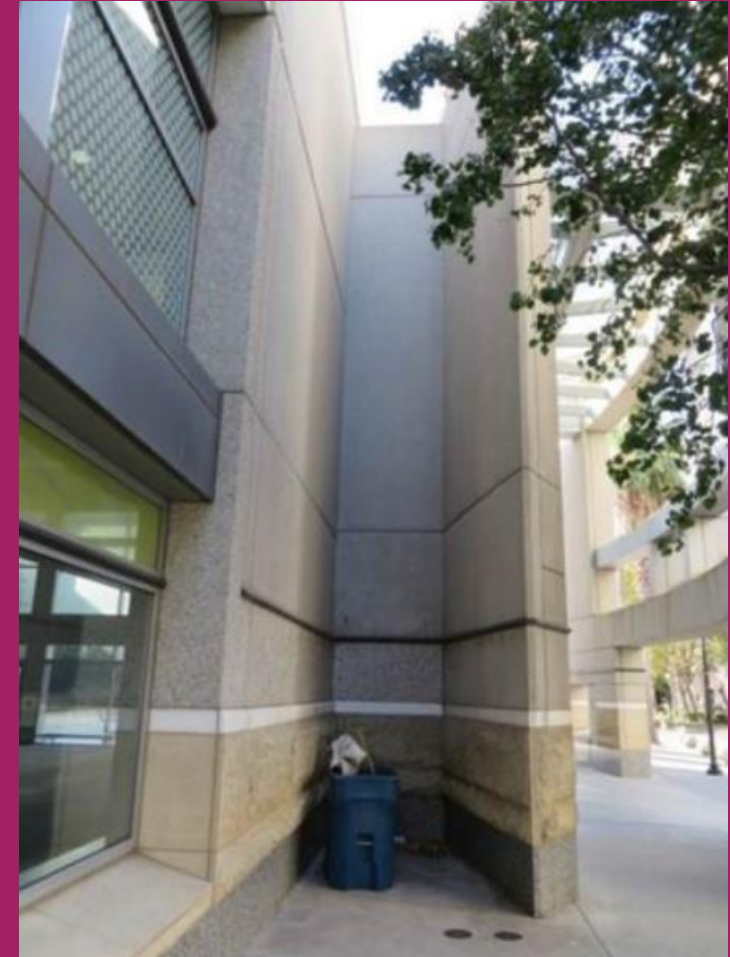
Goals

Natural Surveillance Increases the threat of apprehension by taking steps to increase the perception that people can be seen



Natural Surveillance

POOR NATURAL SURVEILLANCE



Natural Surveillance

POOR NATURAL SURVEILLANCE



Natural Surveillance

POOR NATURAL SURVEILLANCE



Natural Surveillance

POOR NATURAL SURVEILLANCE



Natural Surveillance

Good NATURAL SURVEILLANCE



Natural Surveillance

POOR NATURAL SURVEILLANCE



Natural Surveillance

- Improve visibility with lighting and transparent buildings
- Avoid the creation of building entrapment areas
- Designing landscapes that allow clear unobstructed views of the surrounding area - the 2/6 rule



Access Control

Use well-defined entrances, signs, technology, and landscaping to improve or limit access to certain areas

Goals

- Create inviting buildings
- Control who is allowed in
- Direct people to a controlled point of entry



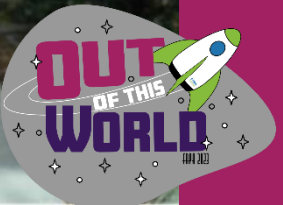
Access Control

POOR ACCESS CONTROL



Access Control

POOR ACCESS CONTROL



Access Control

- Ensuring that entrances are visible, well lit and overlooked by windows
- Clearly defining entryways and by controlling other points of access to a site
- Highlighting main entrance
- Clearly mark public walkways and paths
- Comprehensive wayfinding system



Territorial Reinforcement

The use of physical attributes that express ownership such as fencing, pavement treatments, signage, and landscaping.

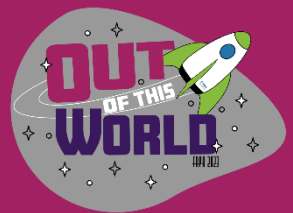
Goals

- Create inviting buildings
- Convey ownership and establish control
- Deter unauthorized use



Territorial Reinforcement

POOR ACCESS CONTROL



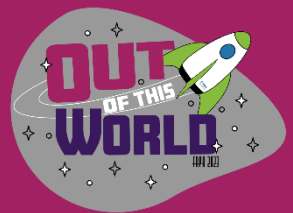
Territorial Reinforcement

POOR ACCESS CONTROL



Territorial Reinforcement

POOR ACCESS CONTROL



Maintenance

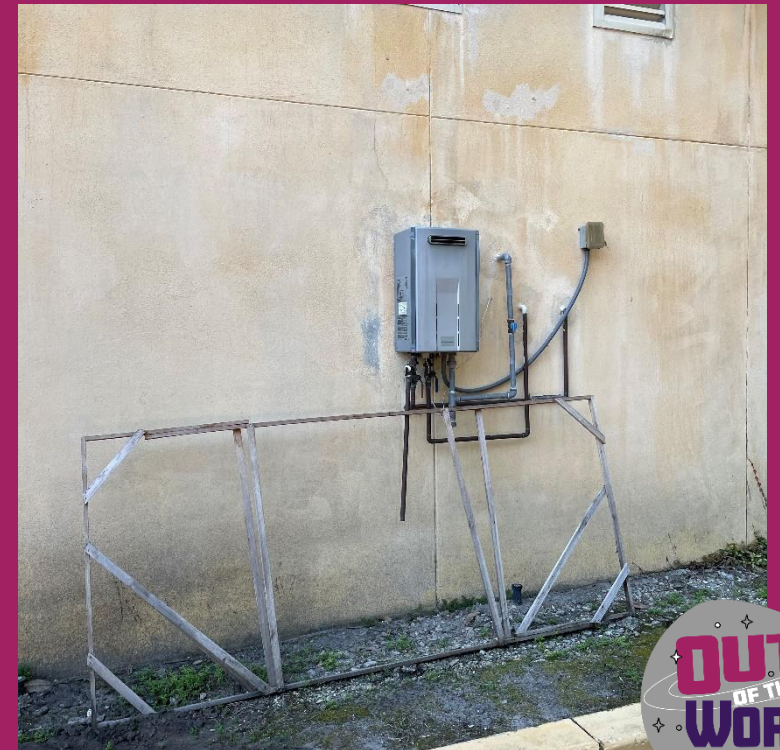
Allows for continued use of space for its intended purpose

Goals

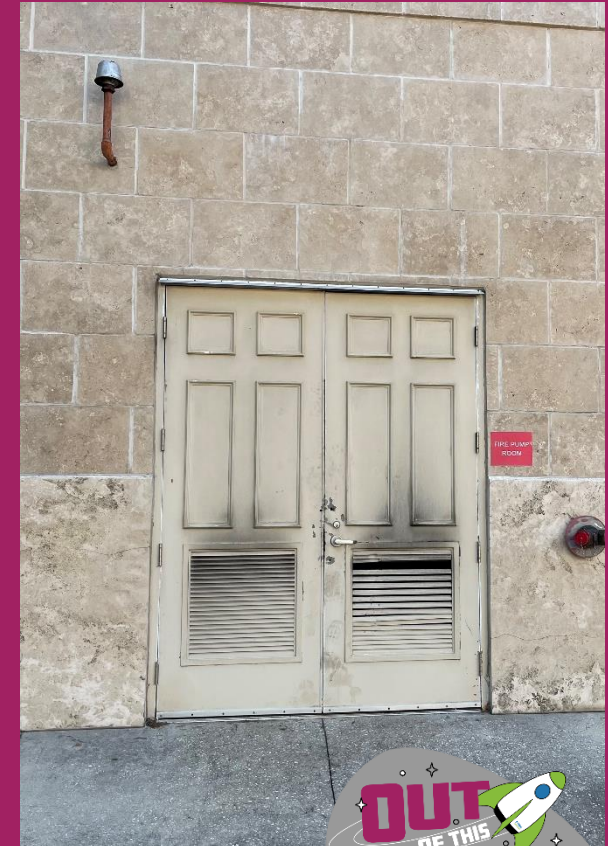
- Additional expression of ownership
- Prevent reduction of visibility
- Deter unauthorized entry



Maintenance



Maintenance



Maintenance



IN EMERGENCY – TAKE ACTION



HOLD! In your room or area. Clear the halls.

STUDENTS

Clear the hallways and remain in a room or area until the “All Clear” is announced. Do business as usual

ADULTS

Close and lock the door. Account for students and adults. Do business as usual.



IN EMERGENCY – TAKE ACTION



SECURE! Get inside. Lock outside doors.

STUDENTS

Return to inside of building. Do business as usual.

ADULTS

Bring everyone indoors. Lock outside doors. Increase situational awareness.

Account for students and adults. Do business as usual.

IN EMERGENCY – TAKE ACTION



LOCKDOWN! Locks, lights, out of sight.

STUDENTS

Move away from sight.
Maintain silence. Do not open the door.

ADULTS

Recover students from hallway if possible. Lock the classroom door. Turn out the lights. Move away from sight. Maintain silence. Do not open the door. Prepare to evade or defend.

IN EMERGENCY – TAKE ACTION

EVACUATE! (A location may be specified)

STUDENTS

Leave stuff behind if required to. If possible, bring your phone.
Follow instructions.

ADULTS

Lead students to the evacuation location. Account for students and adults.
Notify if missing, extra or injured students or adults.



IN EMERGENCY – TAKE ACTION



SHELTER! Hazard and safety strategy.

STUDENTS

Use appropriate safety strategy for the hazard.

Hazard

Tornado
Hazmat
Earthquake
Tsunami

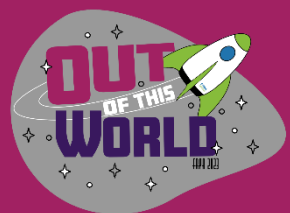
Safety Strategy

Evacuate the shelter area
Seal the room
Drop, cover and hold
Get to high ground

ADULTS

Lead safety strategy. Account for students and adults.

Notify if missing, extra or injured students or adults.



Hardening / Physical Security

Design elements intended to prevent crimes

Goals

- Make building physically difficult to penetrate
- Fortress model focusing on building perimeters
- Locks, reinforced walls, bulletproofing, and laminated glass



Hardening/Physical Security

Use of technology

- Card access
- Security cameras
- Facial recognition
- Remote lockdown



DETECTING BAD BEHAVIOR

- Establish clear rules and policies
- Staff presence with clear light of sight of most activities
- Enforce access control
- Collaborate with Law Enforcement
- Establish crime reporting system
- Provide continued safety education and drills
- Regular view and improvement



BURNS ROADS COMMUNITY CENTER

For the Burns Road Community Center, OLC initially worked on Phase 1 to build a new pool house that included control, lifeguard offices, locker rooms, and storage. OLC was also awarded Phase 2 and 3 to expand and renovate the existing 43,300 sf community center.

The proposed design allowed for the demolition of a portion of the existing building, for the new 2-story expansion of 29,420 sf, changing the image of the facility to a more modern look, providing additional amenities and office spaces. Phase 3 included the renovation of 28,000 sf of the existing building by converting it into a certified daycare for infants to 4 years, as well as an after school program, and media center. OLC recommended reducing the design stage schedule by carrying out the design and documentation in two separate packages in parallel and based on the bid outcome, the client will have the option to proceed with Phase 2 and delay Phase 3 until the funds got secured or proceed with both phases together.

SIZE

57,400 sf

COST

\$32 M







Burns Road
Community Center







BAC

News Bites

EXIT





EXIT

EXIT















CHECK IN QR CODE





Thank You!

Sam Elsheikh

selsheikh@olcdesigns.com

407.992.0470

Charlotte Presensky

cpresensky@pbgfl.com

407.992.0470

FRPA
FLORIDA RECREATION
& PARK ASSOCIATION

For more information about the
Florida Recreation and
Park Association
visit frpa.org

Credit

NICP Crime Prevention Presentation
NICP CPTD training course.

