



WELCOME TO
THE 2019 FRPA
CONFERENCE!

LEARNING OBJECTIVES



- Collect data relevant to define or identify urban forest condition
- Analyze data to determine urban forest needs and opportunities
- Utilize data to create or improve management actions, programs, and policies that inform the management of the urban forest



Mindy Mohrman, Tallahassee-
Leon County Urban Forester

Melinda.Mohrman@talgov.com



Planning:

**Cost..... \$4-\$5/tree
(location)**

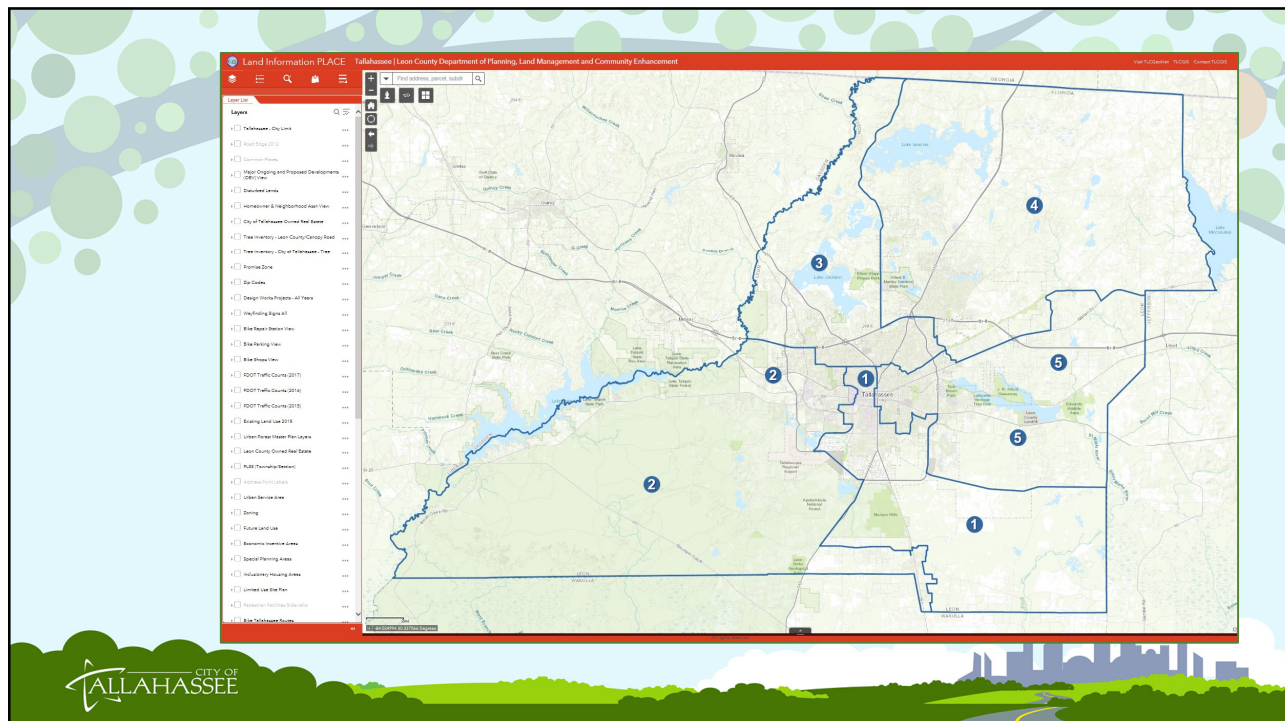
Tree Estimate... 100/street mile

Other considerations:

GIS capabilities

Updates

Staff

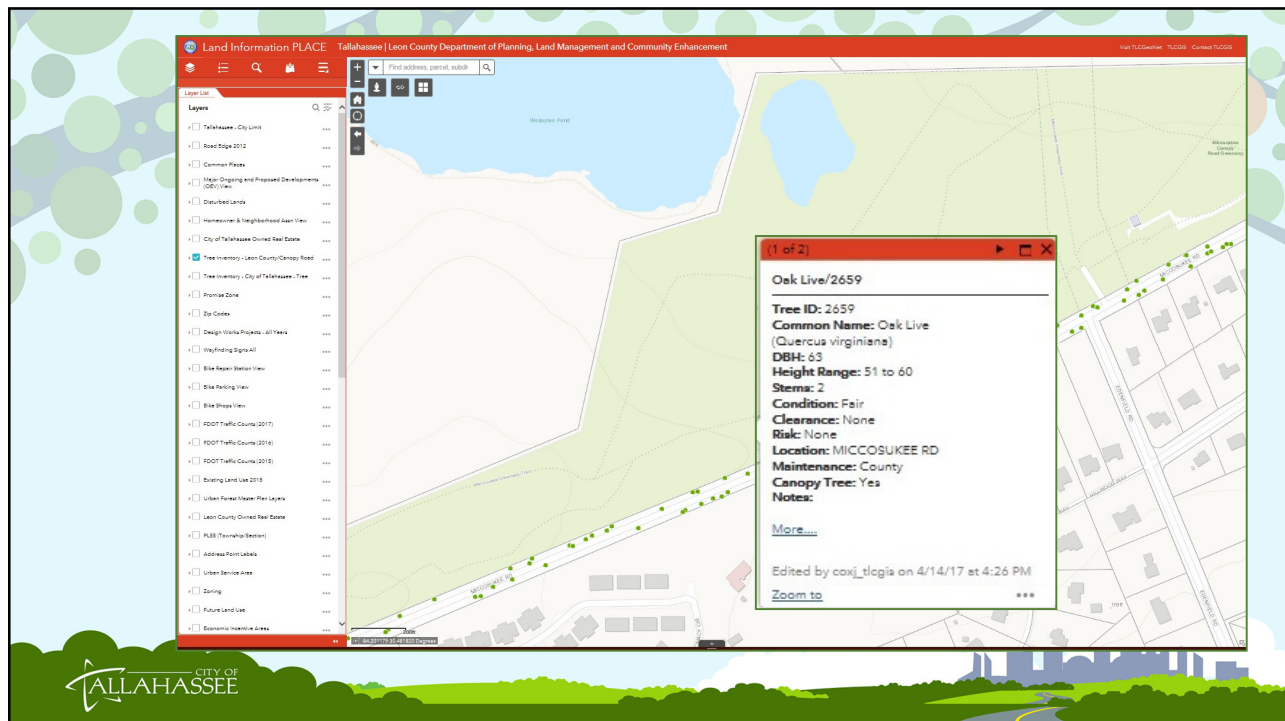
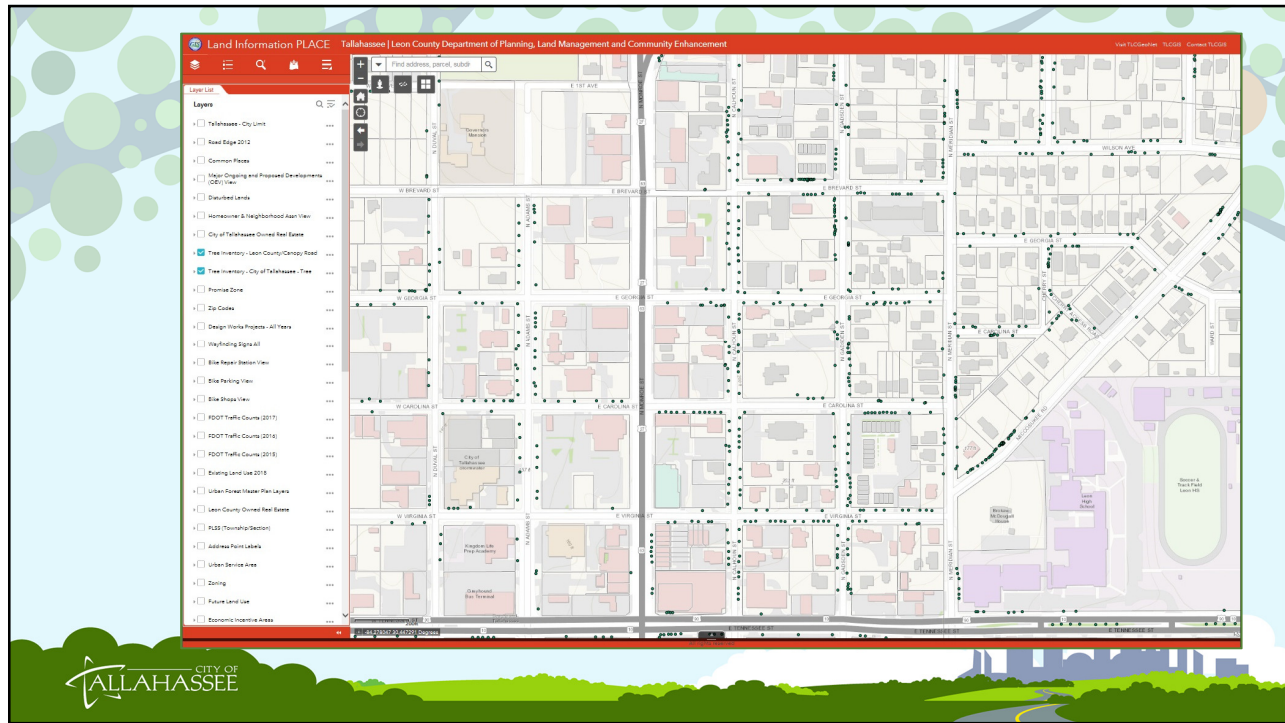


Types of Data Collected



Types of Data Collected





Land Information PLACE Tallahassee | Leon County Department of Planning, Land Management and Community Enhancement

Find address, parcel, sublot

Layers

- Tallahassee - City Limit
- Red Edge 2012
- Major Ongoing and Proposed Developments (GIS) View
- Disturbed Lands
- Homeowner & Neighborhood Area View
- City of Tallahassee Owned Real Estate
- Tree Inventory - Leon County/County Road
- Tree Inventory - City of Tallahassee - Tree**
 - Zoom to
 - Transparency
 - Zip Codes
 - Set visibility range
 - Design Work Plan
 - Disable pop-up
 - Wayfinding Signs
 - Move up
 - Bike Repair Station
 - Move down
 - Bike Parking View
 - View in attribute table
 - Bike Shop View
 - Show item details
 - PDOT Traffic Counts (2017)
 - PDOT Traffic Counts (2016)
 - PDOT Traffic Counts (2015)
 - Existing Land Use 2018
 - Urban Forest Master Plan Layers
 - Leon County Owned Real Estate
 - PLSS Township Section

Tree Inventory - City of Tallahassee - Tree

Options: Show selected records, Show related records, Filter, Show/Hide columns, Export all to CSV

Condition	Relationship	Heritage	Owner	Condition	DialogID	Collect	Entity	EditDate	Notes	LifeCycle	Botanical	Common	Trunks
Good	2		City	City	3637	RM				Active	Liquidambar styraciflua		1
Fair	2		City	City	3637	RM				Active	Quercus nigra		1
Fair	2		City	City	3637	RM				Active	Liquidambar styraciflua		1
Critical	2		City	City	3637	RM				Active	Liquidambar styraciflua		1

Hold features Deleted

CITY OF TALLAHASSEE

Tallahassee Street Tree Species Diversity
Based on 20 sample inventory (2017) - data only

Common Name	Trees	Percent	Genus (Full)	Trees	percent	Genus	percent
Carolina laurelcherry	428	85%	Carolina laurel	85%	Quercus	734	85%
Water oak	258	10%	Water oak	10%	Pinus	588	10%
Laurel oak	189	7%	Laurel oak	7%	Cinnamomum	83	6%
Live oak	166	7%	Live oak	7%	Leguminosae	160	5%
Campbell tree	163	6%	Campbell tree	6%	Pinus	102	5%
Common crapemyrtle	150	5%	crapemyrtle	5%	Cecis	100	4%
Sage palm	130	4%	Sage palm	4%	Cornus	103	4%
Flowering dogwood	101	4%	dogwood	4%	Ulmus	101	4%
Southern magnolia	83	3%	Southern magnolia	3%	Magnolia	83	3%
Black cherry	79	3%	Black cherry	3%	Juniperus	76	3%
Sweetgum	73	3%	Sweetgum	3%	Liquidambar	73	3%
Southern redcedar	72	3%	redcedar	3%	Acer	53	2%
Loblolly pine	67	2%	Loblolly pine	2%	Sabal	51	2%
Drake Chinese elm	58	2%	elm	2%	Albizia	41	1%
Cabbage palmetto	50	2%	palmetto	2%	Morus	40	1%
Shoebill pine	48	2%	Shoebill pine	2%	Buta	32	1%
Mimosa	41	1%			Ilex	29	1%
Red maple	38	1%			Endosperm	36	1%
Shumard oak	38	1%			Carya	25	1%
Yellow palm	32	1%			Pinus	25	1%
Winged elm	27	1%			Cercis	24	1%
Logan tree	26	1%			Rhus	21	1%
Bradford pear	25	1%			Melia	17	1%
Eastern redbud	24	1%			Celtis	15	1%
Pecan	22	1%			Ligustrum	11	0%
White mulberry	21	1%			Platanus	10	0%
American holly	18	1%			Yucca	9	0%
Chinquapin	17	1%			Fernaria	8	0%
Slash pine	17	1%			Chamaecyparis	7	0%
Chinese oak	16	1%			Citrus	7	0%
Other (17+ species - US)	80	22.95%			Taxodium	7	0%

Tallahassee Street Tree Species Diversity
Based on 20 sample inventory (2017) - data only

Tallahassee Street Tree Genus Diversity
Based on 20 sample inventory (2017) - data only

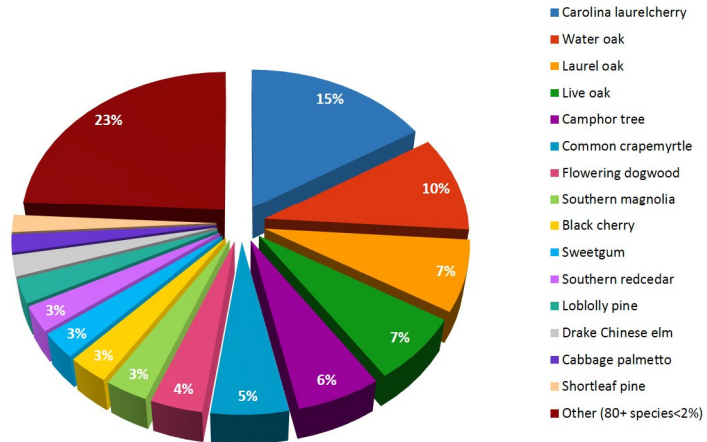
CITY OF TALLAHASSEE

Tree Species Diversity

Tallahassee Public Tree Species Diversity

Based on 3% Sample Inventory

Goal: No one species should exceed 10% of the total population

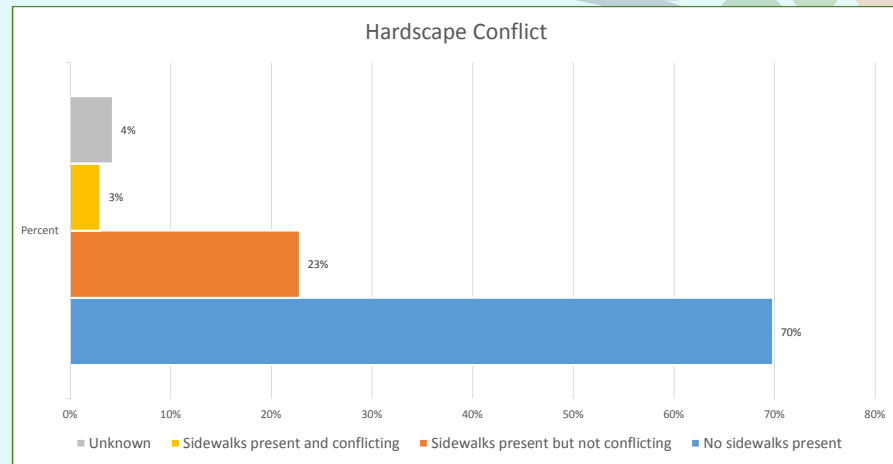


Age Distribution & Condition of Trees

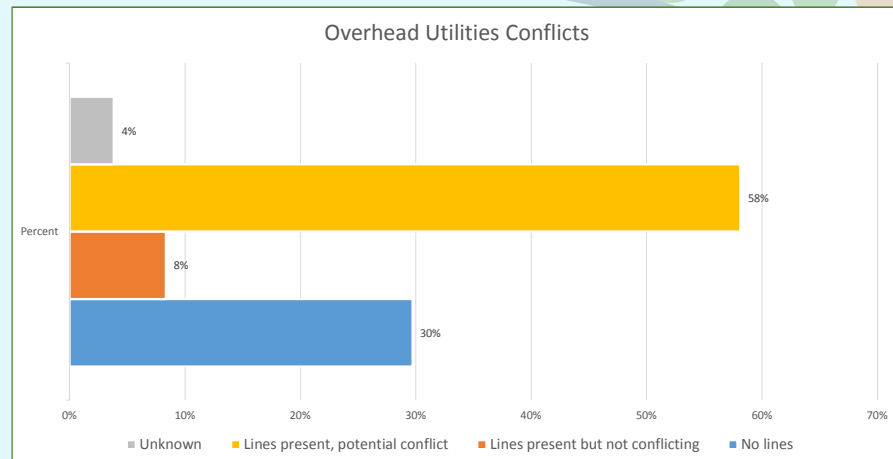
DBH	Qty of Public Trees	Tallahassee Trees	Recommended
0-8" Young	1879	67%	40%
9-17" Established	572	20%	30%
18-24" Maturing	Tree Condition		% of Public Trees
Over 24" Mature	Good		3%
	Fair		78%
	Poor		13%
	Dead/dying		4%
	Unknown		2%



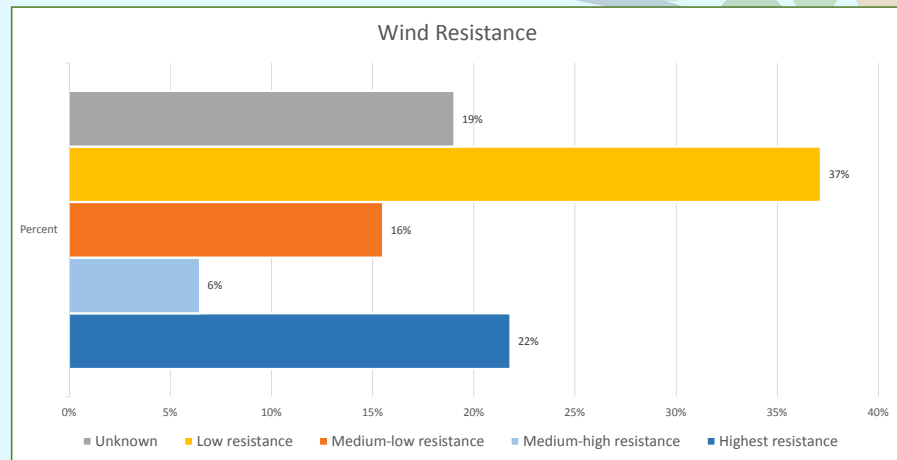
Species Suitability



Species Suitability



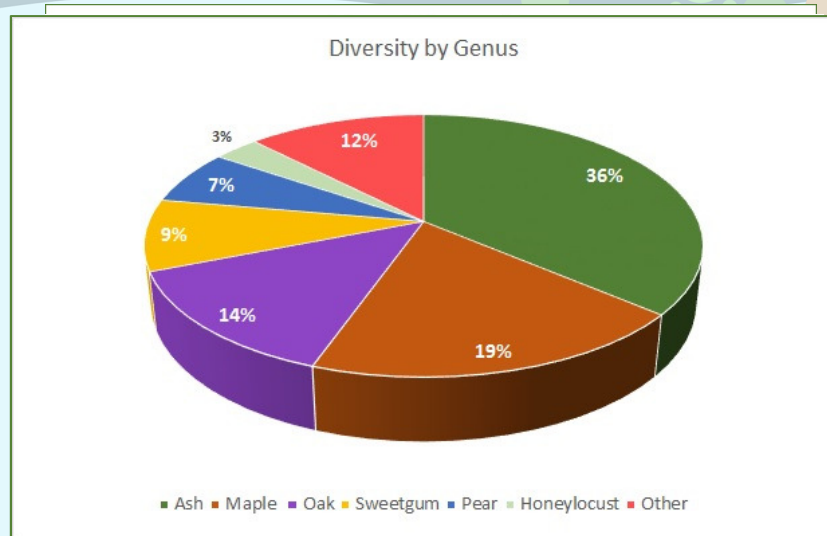
Species Suitability



University of Florida IFAS Hurricane Recovery
Chap. 5, Wind and Trees – Table 3. Wind Resistant Trees



Case Study: Using Inventory Data



Case Study: Using Inventory Data



Measuring Progress

Goal	Benchmark
Improve Canopy Quality	No species should make up more than 10% of our urban forest. Top 5 species should be wind-resistant and long lived.
Maintain Canopy Levels	Updated UTC Assessments show consistent canopy cover percentages.
Engage the Larger Community	Number of neighborhoods or landowners engaged.
General	Accomplishment of a check list of items: code revised, UTC updated, inventory completed.





FRPA
FLORIDA RECREATION
& PARK ASSOCIATION

FOR MORE INFORMATION ABOUT THE FLORIDA RECREATION AND PARK ASSOCIATION VISIT FRPA.ORG