

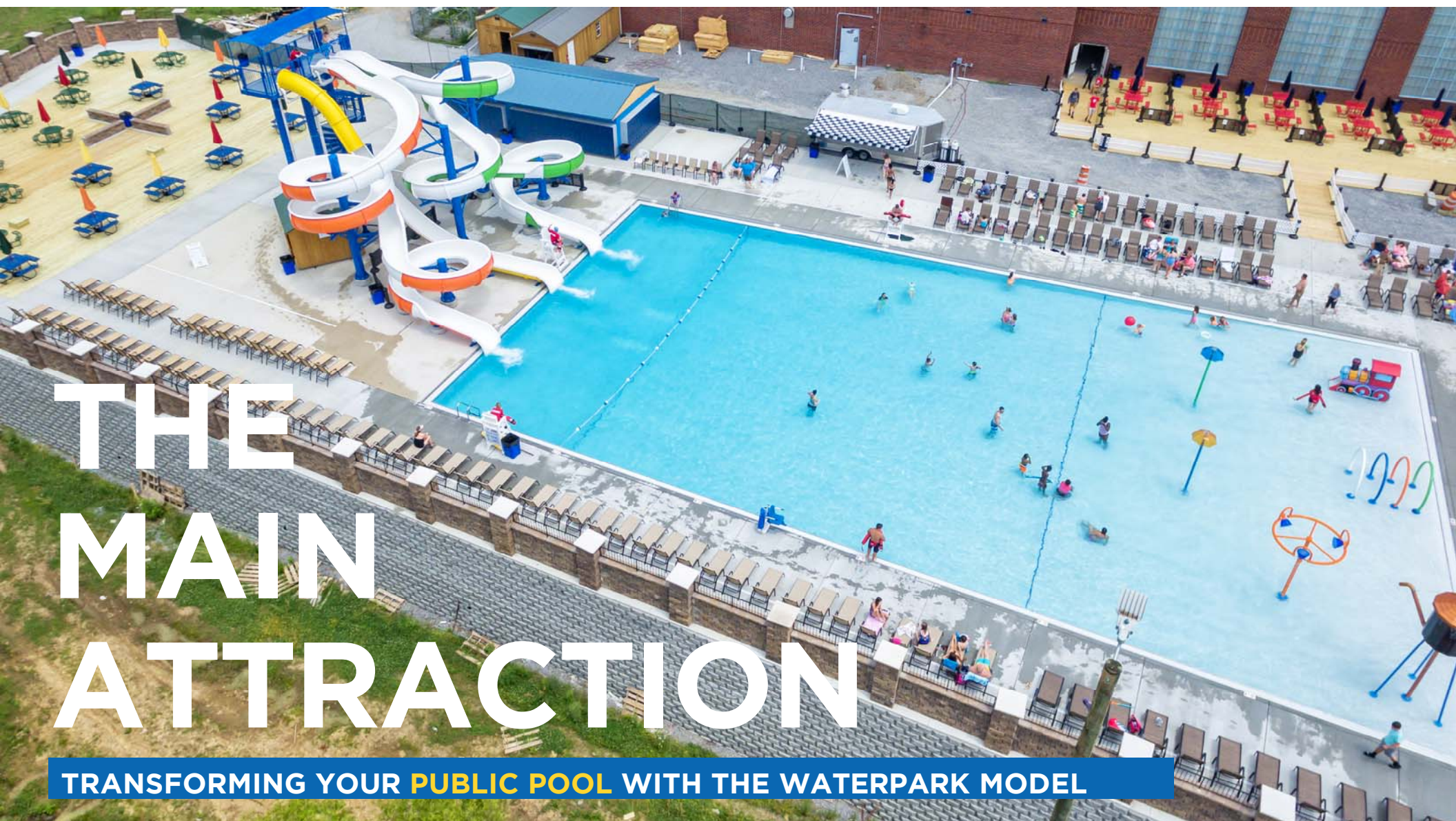


WELCOME TO
THE 2019 FRPA
CONFERENCE!

LEARNING OBJECTIVES



- Upon completion of this session, the participants will understand pool basics and the ABCs of refurbishing
- Learn the benefits of installing individual or multiple play features.
- Gain an overview of different play elements that can leave the biggest impact on communities.



THE MAIN ATTRACTION

TRANSFORMING YOUR PUBLIC POOL WITH THE WATERPARK MODEL

PRESENTATION OVERVIEW

1. Community pools: a post-mortem
2. Play-value planning: the waterpark model
3. Knowing your ABCs: how to optimize your transformation
4. Expand or replace?
5. Inspiring your refurbishment: case studies

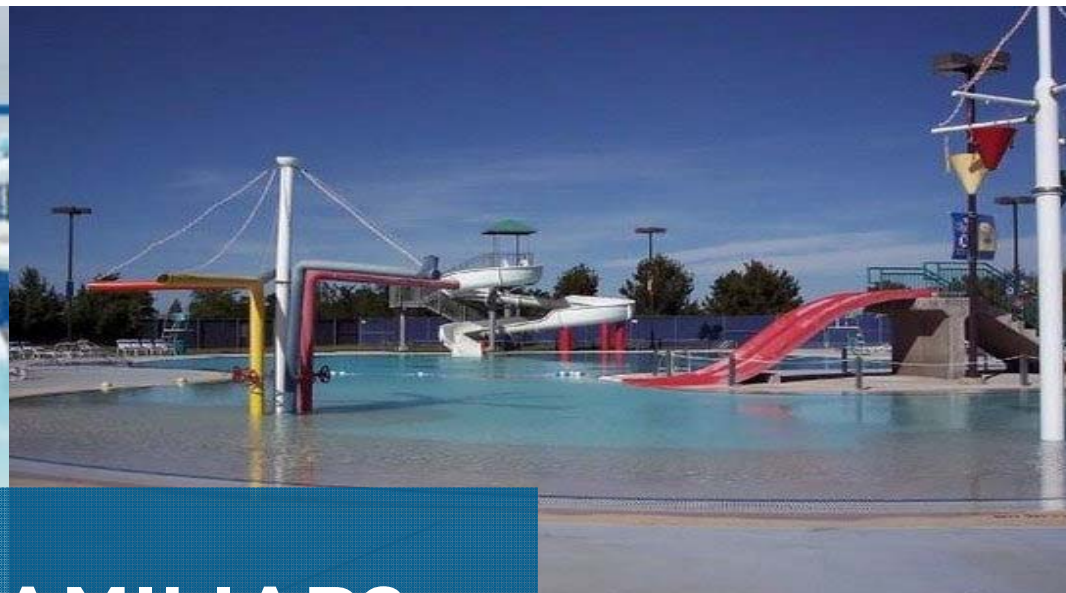




PUBLIC POOLS: A POSTMORTEM

- As **communities evolve**, **changing age demographics**, **accessibility issues** and **energy conservation** concerns have significantly altered the form and function of these public play areas.
- **community play-needs have shifted** drastically since these structures were designed decades ago.
- More and more, these spaces no longer harbor the engagement they once did.





LOOK FAMILIAR?







PLAY VALUE PLANNING: THE WATERPARK MODEL

To encourage more active engagement and longer visits, planners must start thinking about their constituents as **guests**, or customers. And when it comes to play and entertainment, today's customers expect more thrills and bigger surprises than ever before.



PLAY VALUE PLANNING: THE WATERPARK MODEL

A GUEST-FORWARD APPROACH

Successful refurbishments adhere to three golden rules:



OPTIMIZE YOUR SPACE



PLAN FOR MULTIPLE THRILL LEVELS



IMPROVE ACCESSIBILITY



1

**OPTIMIZE
YOUR SPACE**

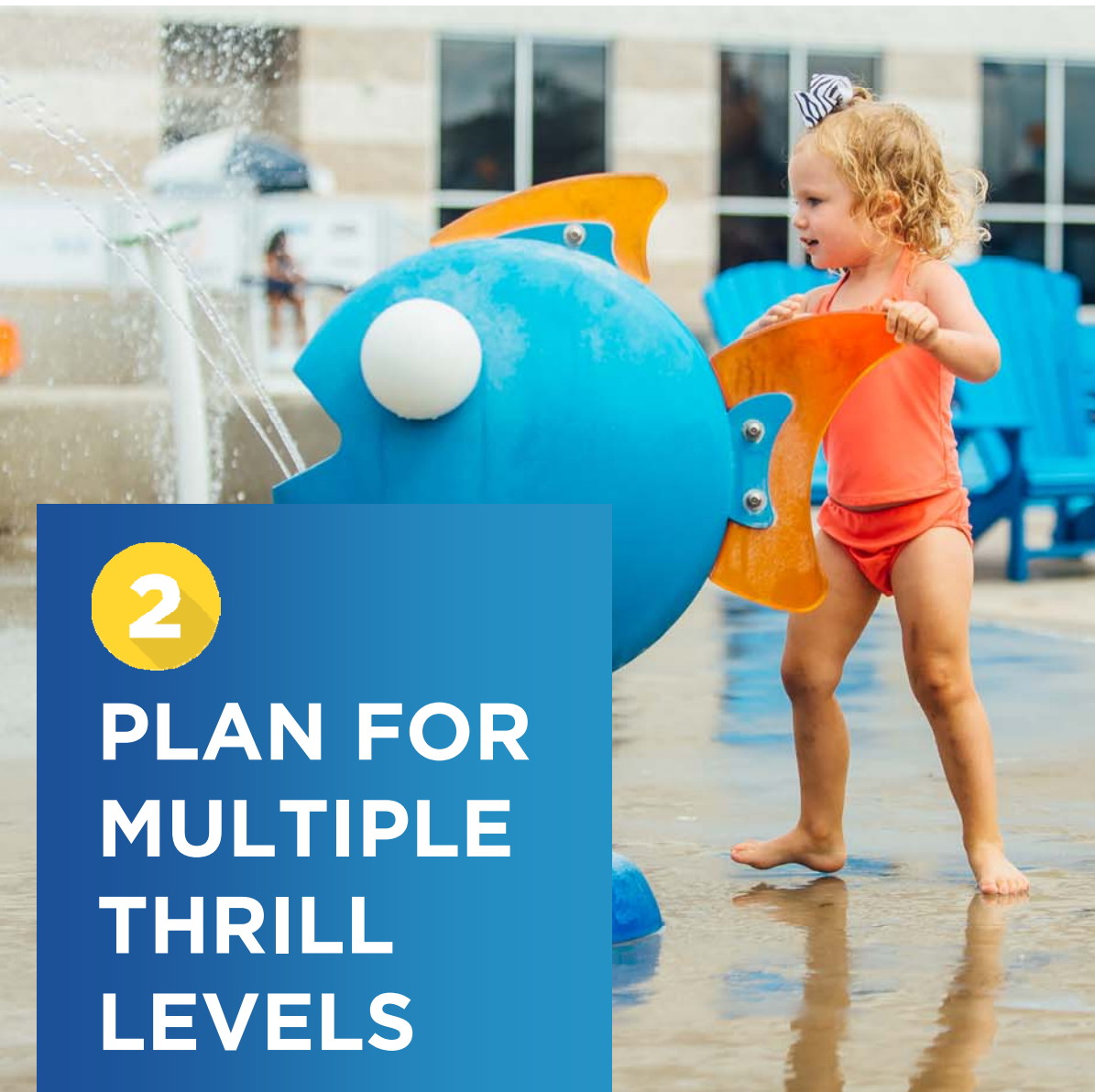
2

PLAN FOR MULTIPLE THRILL LEVELS



2

PLAN FOR MULTIPLE THRILL LEVELS



3

IMPROVE ACCESSIBILITY



KNOWING YOUR ABCs: HOW TO OPTIMIZE YOUR TRANSFORMATION



AVAILABLE WATER SOURCE



BUDGET YOU WANT TO APPLY TO THE PROJECT



CURRENT CONDITION OF YOUR FACILITY





AVAILABLE WATER SOURCE

- Identify the available plumbing in the pump room
- Establish the available / max flow
- Select / design the renovation based on the information





BUDGET

UNDERSTANDING THE SCOPE
OF YOUR PROJECT

TILE &
COPING

PLUMBING

POOL
FINISH

WATER
FEATURES

HARD-
SCAPES

FENCING

POOL
SURROUNDINGS
/MISC



CURRENT CONDITION

OF YOUR FACILITY

TILE AND COPING: What sort of repair work is needed? Remember, tiles not only improve overall aesthetic; they also make it a lot easier to clean your waterline.

POOL FINISH: Have you sandblasted or wetblasted your pool shell recently? Doing so helps identify issues such as hairline cracks and rot.

HARDSCAPE: Do you have a poured-concrete deck or composite coverings?

FENCE: Is it up to code? Is it galvanized to last?

POOL SURROUNDINGS: What are your landscaping considerations? Are you considering additional shading or seating around your pool?

INSPIRING YOUR REFURBISHMENT REPLACING OR EXPANDING?



REPLACING A PLAY STRUCTURE OR FEATURES



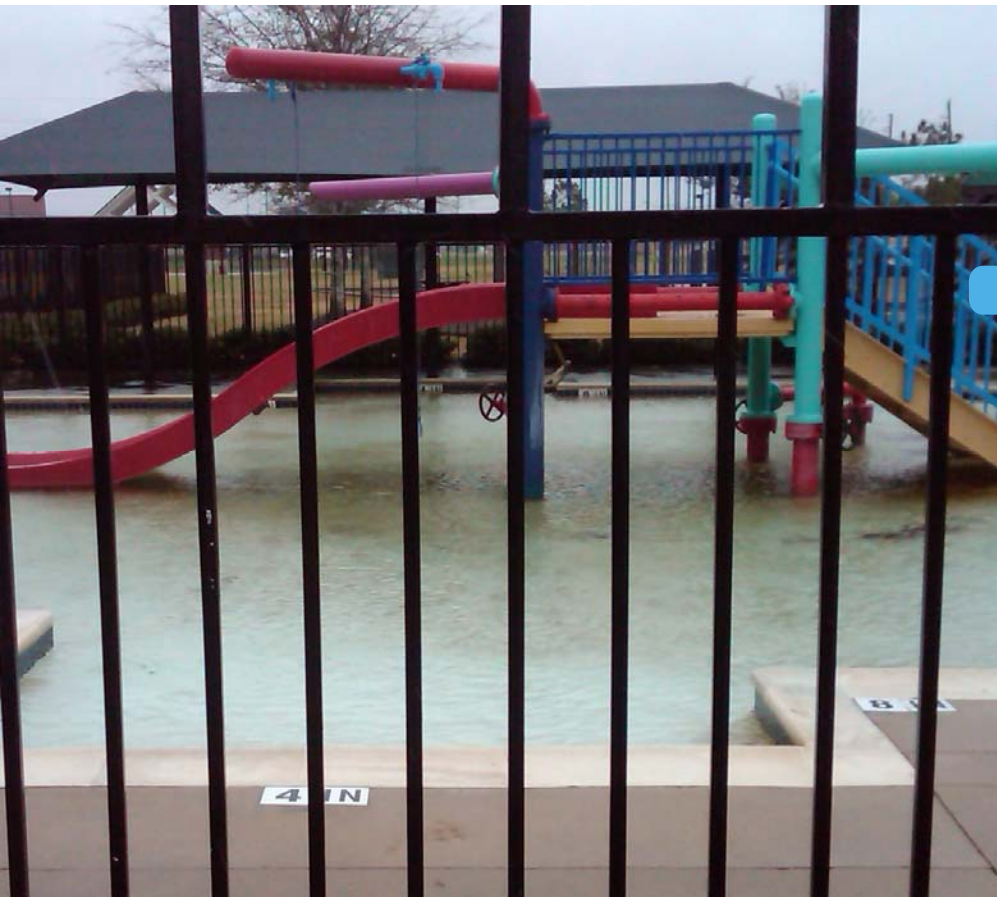
ADDING SINGLE OR MULTIPLE PLAY STRUCTURES OR FEATURES



ADDING OR REPLACING WATERSLIDES

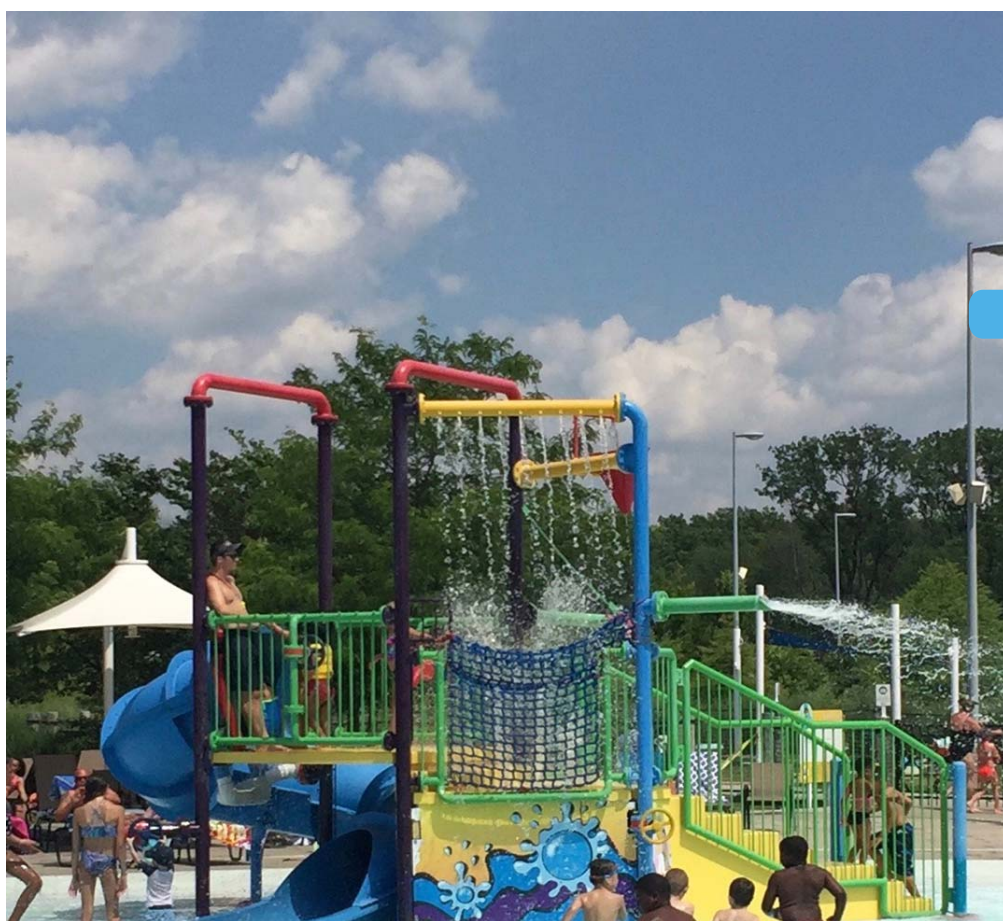


REPLACING A PLAY STRUCTURE





UPGRADING TO A LARGER STRUCTURE









ADDING OR REPLACING INDIVIDUAL FEATURES



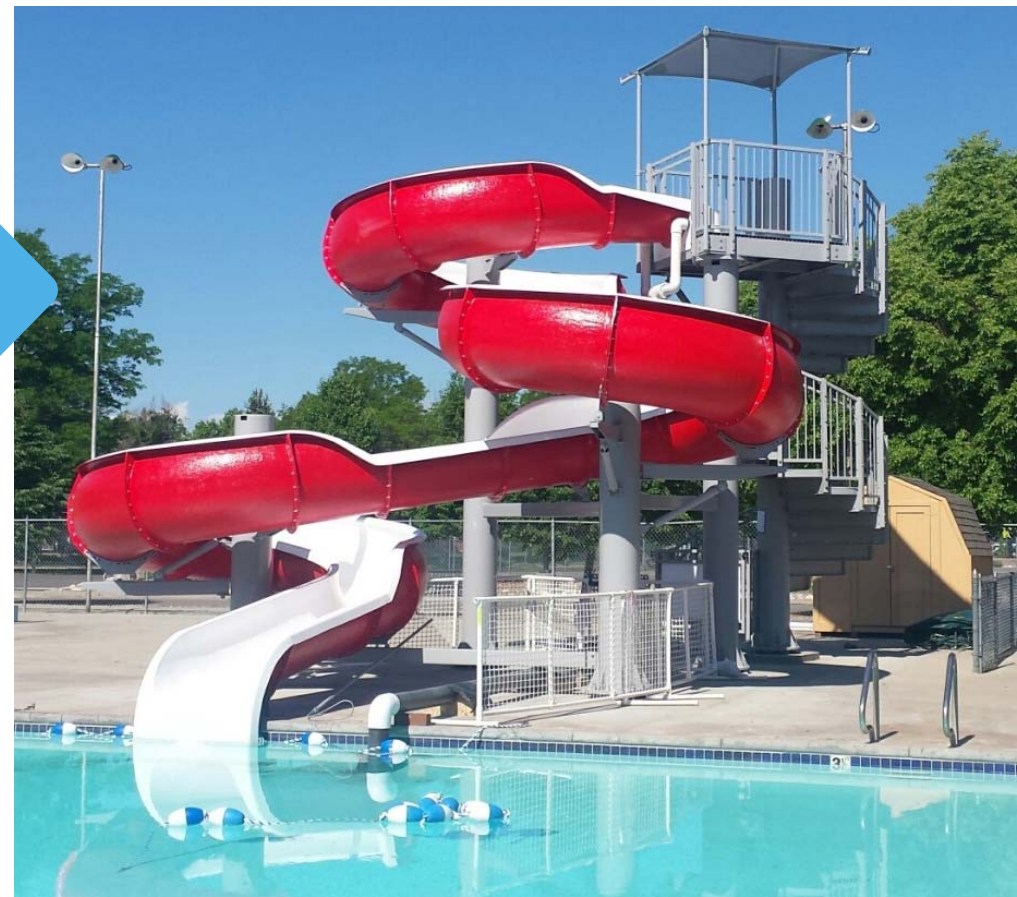


ADDING OR REPLACING INDIVIDUAL FEATURES





ADDING OR REPLACING WATERSLIDES



GET STARTED

LEVERAGE OUR EXPERIENCE AND WORK WITH OUR TEAM OF DEDICATED PROFESSIONALS TO ENSURE A SUCCESSFUL PROJECT

- Engineering services
- Renderings capabilities
- Design center
- Regional representation
- Technical support on-site
- Renown after-sale service and support





Eduardo Cruz
Business Development Manager, Florida,
LATAMC

Vortex Squares International

Toll-free: 1.877.5VORTEX <http://www.vortex-intl.com/>





FOR MORE INFORMATION ABOUT THE FLORIDA RECREATION AND PARK ASSOCIATION VISIT FRPA.ORG